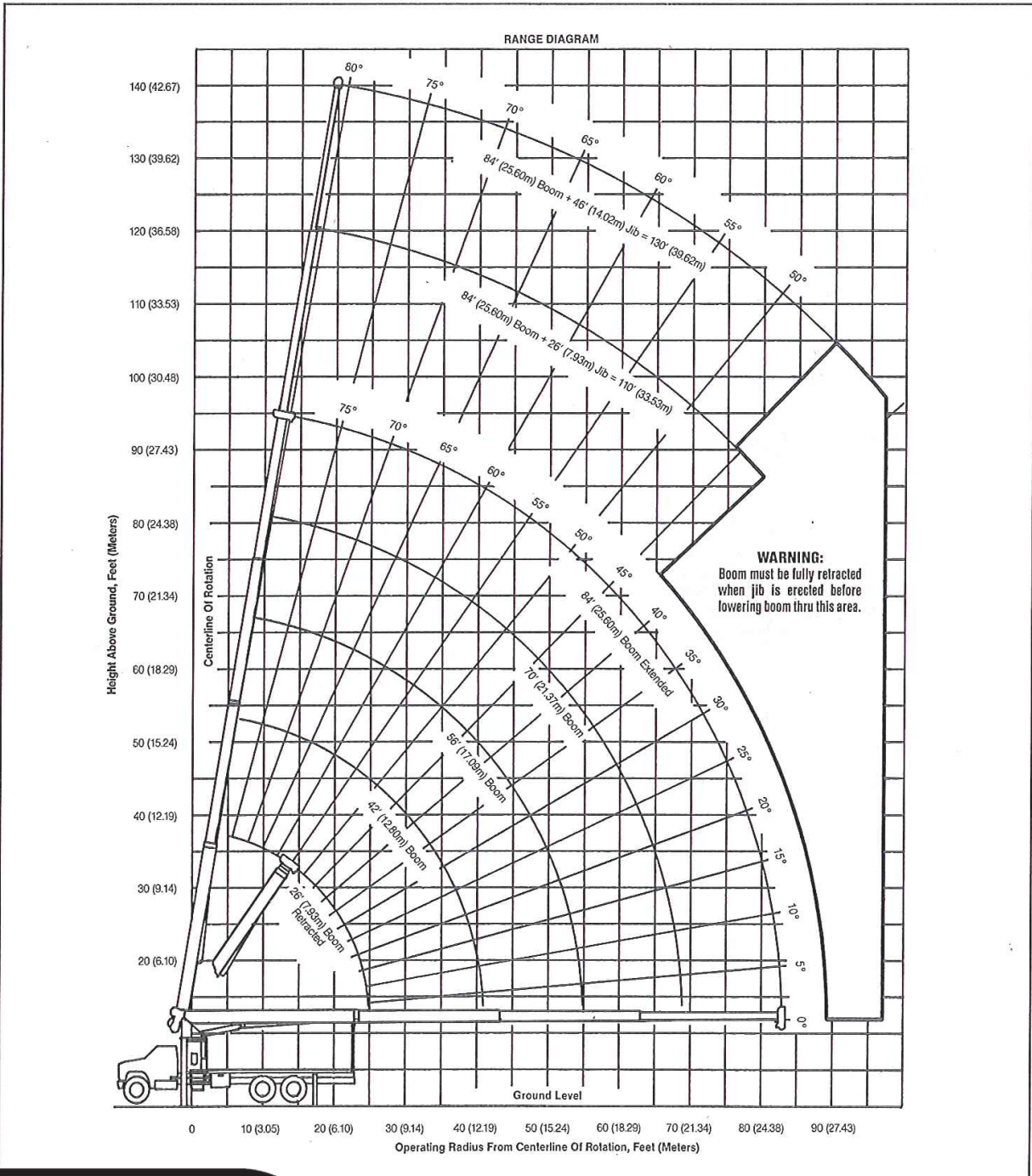




GENERAL SPECIFICATIONS MODEL 2284 TRUCK-MOUNTED CRANE

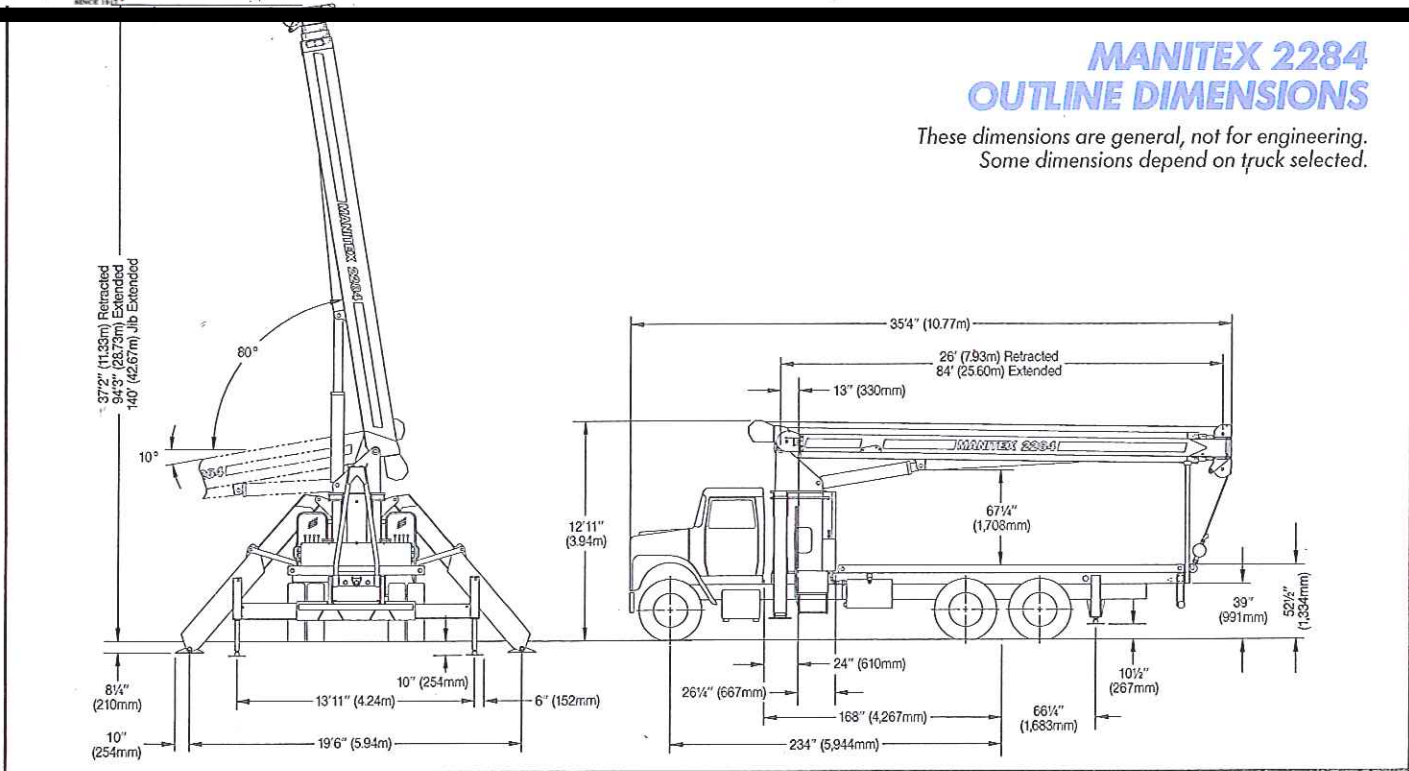


WARNING!

The provided information is for reference purposes only and should not be used to operate the crane. The crane's specific operator's manual should be consulted and understood prior to crane operation.

MANITEX 2284 OUTLINE DIMENSIONS

These dimensions are general, not for engineering.
Some dimensions depend on truck selected.



STANDARD EQUIPMENT

- 4-section telescopic boom 26' (7.93m) to 84' (25.60m)
- Pedestal, turret, rotation bearing & swing system
- 20' (6.10m) subframe
- A-frame link-type outriggers
- Out-and-down rear stabilizers
- 3-sheave boom point
- Boom-hoist cylinder
- 2-speed planetary hoist
- Dual operator stations
- Removable boom rest
- 5-ton (4.5-mt) hook & ball
- 372° non-continuous rotation
- 56-gallon (212-liter) hydraulic reservoir
- 3-section vane-type hydraulic pump
- System pressure gauge
- Capacity-alert system, audio/visual
- Anti-two-block shutoff
- Audible outrigger/stabilizer motion alarm
- Back-up alarm
- Signal horn
- 300' (91.44m) of 9/16" (14.3mm) EIPS IWRC wire rope
- Finish paint in Manitec colors
- Operator/service/parts manuals

WEIGHTS

Total crane, including hydraulic fluid **Lbs. 19,200 Kgs. 8,709**

Additions:

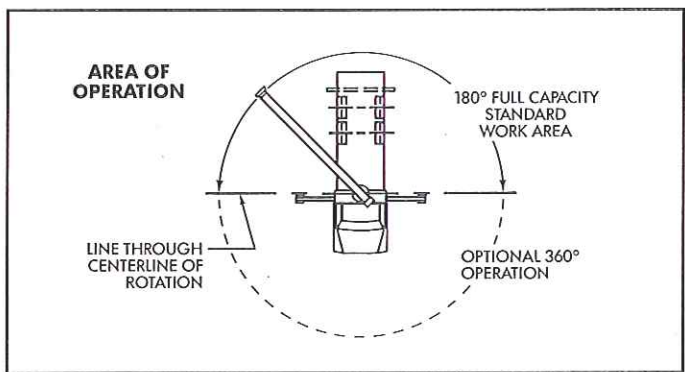
26' (7.93m) fixed-length jib.....	819	372
46' (14.02m) telescopic jib.....	1,220	553
15-ton (13.6-mt) single-sheave block.....	263	119
25-ton (22.7-mt) triple-sheave block.....	380	172
Hanger sheave for 5- and 6-part line.....	38	17
20'4" (6.20m) steel or wood bed.....	1,900	862

TRUCK CHASSIS DATA

Minimum Requirements:

Some configurations and options may increase requirements

Wheelbase	234"	5,944mm
Cab to axle	168"	4,267mm
Front axle gross weight rating	14,000 lbs	6,350 kgs
Rear axle gross weight rating.....	38,000 lbs	17,237 kgs
Frame section modulus.....	20.0 in ³	328 cc
	110,000 psi	758,450 kPa
Nominal frame width	34"	864mm



ALLOWABLE LINE PULL

1-PART LINE	2-PART LINE	3-PART LINE	4-PART LINE	5-PART LINE	6-PART LINE
8,500 Lbs. (3,856 Kgs.) ¹ 7,400 Lbs. (3,357 Kgs.) ²	17,000 Lbs. (7,711 Kgs.) ¹ 14,800 Lbs. (6,713 Kgs.) ²	25,500 Lbs. (11,567 Kgs.) ¹ 22,200 Lbs. (10,070 Kgs.) ²	34,000 Lbs. (15,422 Kgs.) ¹ 29,600 Lbs. (13,426 Kgs.) ²	42,500 Lbs. (19,278 Kgs.) ¹ 37,000 Lbs. (16,783 Kgs.) ²	44,000 Lbs. (19,958 Kgs.) ¹ 44,000 Lbs. (19,958 Kgs.) ²

WARNING: Anti-two block system must be in good operating condition before operating crane. Refer to Owner's Man-

¹With 9/16" (14.3mm) 6 x 25 IWRC (3.5:1 S.F.) 29,750 Lbs. (13,494 Kgs.) Minimum Breaking Strength
²With 9/16" (14.3mm) Rotation Resistant (5.0:1 S.F.) 37,000 Lbs. (16,783 Kgs.) Minimum Breaking Strength

MODEL 2204 LOAD RATING CHART

This capacity chart is for reference use only and must not be used for a specific serial number crane.
Lifting off the main boom point while the swing-around jib is erected is not approved.

MEETS
**ANSI B30.5
REQUIREMENTS**

OUTRIGGERS AND STABILIZERS EXTENDED																															
Operating Radius		Load Rating 26' (7.92m) Boom			Load Rating 42' (12.80m) Boom			Load Rating 56' (17.07m) Boom			Load Rating 70' (21.34m) Boom			Load Rating 84' (25.60m) Boom																	
		Loaded Bm. Angle	Pounds	Kilograms	Loaded Bm. Angle	Pounds	Kilograms	Loaded Bm. Angle	Pounds	Kilograms	Loaded Bm. Angle	Pounds	Kilograms	Loaded Bm. Angle	Pounds	Kilograms															
Feet	Meters																														
4'	1.22	80°	44,000	19,958																											
6'	1.83	77°	34,600	15,695																											
8'	2.44	72°	27,800	12,610																											
10'	3.05	67°	23,350	10,591	77°	20,000	9,072																								
12'	3.66	62°	20,200	9,163	74°	17,860	8,101	79°	16,400	7,439																					
14'	4.27	57°	17,780	8,065	71°	15,660	7,103	76°	14,400	6,532	80°	13,320	6,042																		
16'	4.88	51°	15,870	7,199	68°	13,930	6,319	74°	12,780	5,797	78°	11,770	5,339																		
20'	6.10	38°	12,800	5,806	62°	11,400	5,171	70°	10,400	4,717	75°	9,570	4,341	78°	8,900	4,037															
25'	7.62				54°	9,230	4,187	64°	8,400	3,810	70°	7,710	3,497	74°	7,180	3,257															
30'	9.14				44°	7,630	3,461	58°	7,000	3,175	66°	6,410	2,908	71°	5,910	2,681															
35'	10.67				33°	6,260	2,839	52°	5,910	2,681	61°	5,410	2,454	67°	4,980	2,259															
40'	12.19				14°	4,500	2,041	45°	5,040	2,286	56°	4,630	2,100	63°	4,260	1,932															
45'	13.72							37°	4,260	1,932	51°	4,000	1,814	59°	3,670	1,665															
50'	15.24							26°	3,470	1,574	45°	3,460	1,569	55°	3,190	1,447															
55'	16.76										39°	2,960	1,343	51°	2,770	1,256															
60'	18.28										31°	2,430	1,102	46°	2,390	1,084															
65'	19.81										21°	1,920	871	41°	2,010	912															
70'	21.34													35°	1,620	735															
75'	22.86													27°	1,300	590															
80'	24.38													19°	990	449															
Deduction for Stowed Jib																															
		650			295			400			181			300			136			250			113			200			91		

JIB LOAD RATING IN LBS./KGS. WITH OUTRIGGERS AND STABILIZERS EXTENDED							
Operating Radius		Jib Load Rating 26' (7.92m) Jib For All Boom Lengths			Jib Load Rating 46' (14.02m) Jib For All Boom Lengths		
		Loaded Bm. Angle	Pounds	Kilograms	Loaded Bm. Angle	Pounds	Kilograms
25'	7.62	79°	4,510	2,046			
30'	9.14	76°	3,890	1,765	79°	3,100	1,406
35'	10.67	74°	3,350	1,519	77°	2,800	1,270
40'	12.19	71°	2,900	1,315	75°	2,520	1,143
45'	13.71	68°	2,500	1,134	72°	2,240	1,016
50'	15.24	65°	2,170	984	70°	1,980	898
55'	16.76	62°	1,870	848	67°	1,750	794
60'	18.23	59°	1,520	689	65°	1,550	703
65'	19.81	56°	1,240	562	63°	1,370	621
70'	21.34	52°	980	445	60°	1,210	549
75'	22.86	49°	760	345	57°	1,050	476
80'	24.38	45°	570	258	54°	850	386
85'	25.91				51°	680	308
90'	27.43				48°	520	236

INFORMATION: Deductions must be made from rated loads for stowed jib, optional attachments, hooks, and load blocks (see deduction chart). Weights of slings and all other load handling devices shall be considered a part of the load.

Deductions From Rated Loads For Manitex Supplied Load Handling Devices		
Hanger Sheave	50 Lbs.	(23 Kgs.)
Overhaul Ball	120 Lbs.	(54 Kgs.)
Single Sheave Load Block	280 Lbs.	(127 Kgs.)
Double Sheave Load Block	350 Lbs.	(159 Kgs.)
Triple Sheave Load Block	380 Lbs.	(172 Kgs.)
Hose Reel	140 Lbs.	(64 Kgs.)
Swing-Around Jib	See load chart	



WARNING: Before operating any Manitex crane, the operator must read and understand the owner's manual and other instructions for a specific serial number crane. This chart is only a guide. The notes and warnings are for illustration only and cannot be used to operate a crane.

The operating radius shown in the jib load rating chart is for fully extended boom only. When boom is not fully extended, use only loaded boom angle to determine load rating of jib. Do not rely on capacity-alert system when lifting from jib.

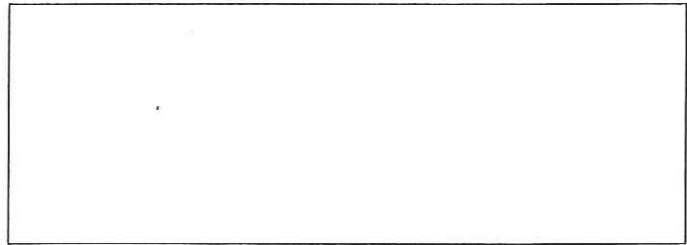
Main boom load ratings above the heavy line are based on a constant hoist cylinder pressure, machine structural competence, and do not exceed 85% of tipping. Jib load ratings above the heavy line are based only on machine structural competence and do not exceed 85% of tipping.

DO NOT OPERATE A MANITEX TRUCK-MOUNTED CRANE OR ACCESSORIES WITHIN 10' (3.05m) OF LIVE POWER LINES.

Crane load ratings on outriggers are based on freely suspended loads with the machine leveled and standing on a firm uniform supporting surface. No attempt shall be made to move a load horizontally on

MANITEX, INC.
A Subsidiary of The Manitowoc Company, Inc.

4300 Acapulco Avenue ■ McAllen, Texas 78503
Telephone: 210-630-2690 ■ Telefax: 210-630-2695



Because of continuing improvements, Manitex reserves the right to change product specifications without notice.