



UNIT NO. HS-14-9  
 SERIAL NO. 4590798161

EQUIPMENT SPECIFICATIONS FOR:

**BOOM TRUCKS**

MAKE: STERLING MODEL: \_\_\_\_\_ YEAR: 1999  
 MAKE: TEREX STINGER MODEL: 2800 YEAR: 1999  
 ENGINE MAKE & MODEL: \_\_\_\_\_

BELT REPLACEMENT:

FAN UPPER	<u>NA</u>	LOWER	_____
ALT. UPPER	<u>NA</u>	LOWER	_____
P/S UPPER	<u>NA</u>	LOWER	_____
AIR UPPER	<u>NA</u>	LOWER	_____
STARTER UPPER	<u>NA</u>	LOWER	_____
ALTERNATOR UPPER	<u>NA</u>	LOWER	_____
FUEL PUMP UPPER	<u>NA</u>	LOWER	_____
BATTERIES UPPER	<u>NA</u>	LOWER	_____

FLUID CAPACITIES:

FUEL UPPER	<u>NA</u>	LOWER	_____
OIL UPPER	<u>NA</u>	LOWER	_____
COOLANT UPPER	<u>NA</u>	LOWER	_____
HYD. OIL UPPER	<u>NA</u>	LOWER	_____
PLANITARY	_____	REAR ENDS	_____
TRANSMISSION	_____		_____
MAIN HOIST	_____	SWING BOX	_____
AUX HOIST	_____		_____

FILTER REPLACEMENT:

OIL UPPER	<u>NA</u>	LOWER	<u>P553191 OR 51791</u>
FUEL UPPER	<u>NA</u>	LOWER	<u>33636 &amp; (2) 33118</u>
COOLANT UPPER	<u>NA</u>	LOWER	_____
AIR UPPER	<u>NA</u>	LOWER	<u>46664</u>
HYDRAULIC UPPER	<u>NA</u>	LOWER	<u>P550252 OR 51860</u>
TRANSMISSION	<u>P551551 OR 51551</u>		

CABLE REPLACEMENT:

FRONT DRUM	<u>275' 9/16" 6X25 IWRC</u>		
REAR DRUM	<u>NA</u>		
CABLE WT.	<u>0.59 LBS. PER FT.</u>		
LINE PULL	<u>9,600 LBS.</u>		

TIRE SIZE: 11R22.5 GOODYEAR

AXLE WEIGHTS:

AXLE #1	<u>11,300 LBS.</u>
AXLE #2	<u>18,800 LBS.</u>

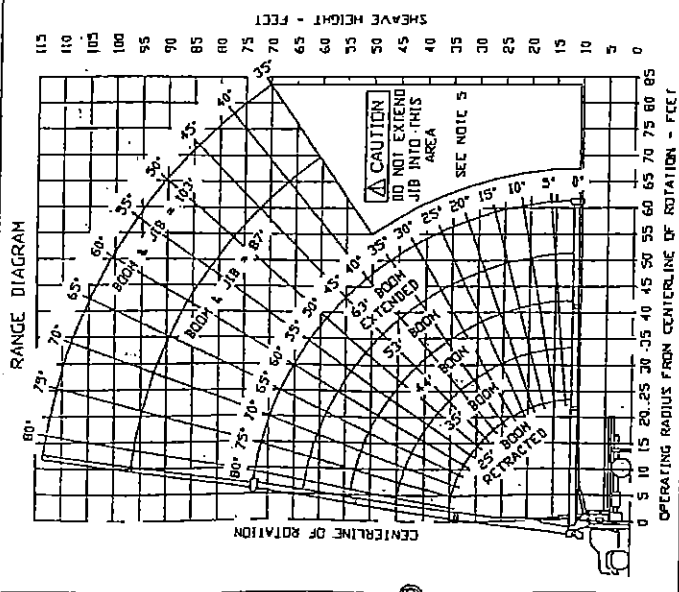
# LOAD CHART TC-2863

HS-14-9

P-244B-Rev B

## OPERATOR'S MANUAL

**Terex Cranes**  
 U.S. PATENT NOS. 4,812,022, 4,459,786, 5,012,939  
 CANADA PAT. NO. 1,097,265  
 MODEL TC-2863  
 MAXIMUM LOAD CHART



**CAUTION**

MULTI-LOCK SYSTEM MUST BE IN GOOD OPERATING CONDITION BEFORE OPERATING. REFER TO OWNER'S MANUAL.

KEEP AT LEAST 3 WRAPS OF CABLE ON DRUM AT ALL TIMES.

USE ONLY 9/16" DIAMETER CABLE WITH 33,600 LB. BREAKING STRENGTH ON THIS MACHINE.

THIS MACHINE COMPLIES WITH OSHA REGULATIONS FOR 1968 AND 1968/550 WHERE APPLICABLE AT DATE OF MANUFACTURE

1 PART LINE 2 PART LINE 3 PART LINE

ALL LOADS UP TO 2,600 LBS. STD. CABLE

ALL LOADS UP TO 19,200 LBS. STD. CABLE

ALL LOADS UP TO 28,800 LBS. STD. CABLE

ALL LOADS UP TO 6,200 LBS. ROT. RESISTANT CABLE

ALL LOADS UP TO 19,440 LBS. ROT. RESISTANT CABLE

THIS MACHINE COMPLIES WITH OSHA REGULATIONS FOR 1968 AND 1968/550 WHERE APPLICABLE AT DATE OF MANUFACTURE

BOOM ANGLE	LOAD RATING IN LBS. WITH OUTRIGGERS EXTENDED				BOOM LENGTH	AREA OF OPERATION
	25 FT	35 FT	44 FT	53 FT		
4	28800			163 FT		
5	24000					
6	16800	14200				
7	14200	13000	12600			
8	12200	11000	10800	9425		
9	10100	9525	9125	7725		
10	7425	7325	7025	6725	71	
11	5825	5425	5125	5225	66	
12	4425	4525	4325	4225	61	
13	3725	3725	3625	3625	56	
14	3025	3025	3025	3025	50	
15	2825	29	2925	2925	44	
16	2325	29	2325	2325	44	
17	1725	14	1725	1725	36	
18	1225		1225	1225	27	
19	825		825	825	20	
20	580		580	580	15	
21	410		410	410	11	
22	310		310	310	8	
23	230		230	230	6	
24	180		180	180	5	
25	140		140	140	4	
26	110		110	110	3	
27	80		80	80	2	
28	60		60	60	2	
29	45		45	45	2	
30	35		35	35	2	
31	25		25	25	2	
32	15		15	15	2	
33	10		10	10	2	
34	5		5	5	2	
35	0		0	0	2	

**AREA OF OPERATION**

360° FULL CAPACITY WORK AREA

REDUCTIONS FROM RATED LOADS FOR LOAD HANDLING DEVICES

AUXILIARY BLOCK 50 LBS

OVERHAUL BALL 125 LBS

CRANE LOAD BLOCK 200 LBS

STOWED JIB REDUCTIONS

450 325 250 200 175

**JIB CAPACITIES FOR ALL BOOM LENGTHS**

CAPACITY ALERT SYSTEM, IF SO EQUIPPED, IS NOT FUNCTIONAL WHEN LIFTING WITH JIB

LOADED BOOM ANGLE	35°	40°	45°	50°	55°	60°	65°	70°	75°	80°
RETRACTED 24 FT JIB	700	825	1000	1150	1340	1600	1900	2300	3100	4160
EXTENDED 40 FT JIB	520	580	650	730	810	930	1080	1400	1810	2260

**⚠ DANGER**

1 THE OPERATOR MUST READ AND UNDERSTAND THE OWNER'S MANUAL BEFORE OPERATING THIS CRANE

2 APPROVED REDUCTIONS FROM RATED LOADS ARE SHOWN ON THIS CHART IS NOT INTENDED OR

3 LOADED BOOM ANGLE AT SPECIFIED BOOM LENGTHS GIVE ONLY AN APPROXIMATION OF THE OPERATING

4 DO NOT EXCEED THE OPERATING LOADS. LOADS SHOULD BE GREATER TO ACCOUNT FOR DEFLECTIONS

5 USE RATING OF HEAVY LIFTING BOOM FOR BOOM LENGTHS NOT SHOWN. USE RATING OF HEAVY GREATER

6 BOOM MUST BE FULLY RETRACTED WHEN JIB IS EXTENDED BEFORE LOWERING BELOW 30° BOOM ANGLE

7 JIB HAS NO LIFTING CAPACITY BELOW A 30° BOOM ANGLE

8 LIFTING OF THE MAIN BOOM MUST BE DONE WHILE THE SHING AROUND JIB IS EXTENDED IS NOT INTENDED

9 IS APPROVED

10 OPERATING ON SURFACES UNLESS SPECIFICALLY MARKED ON FREELY SUSPENDED LOADS WITH THE MACHINE

11 MOVE A LOAD HORIZONTALLY ON THE GROUND IN ANY DIRECTION

12 STABILITY SUCH AS HAZARDOUS SURFACES, WIND AND OTHER FACTORS AFFECTING

13 MUST ALL BE TAKEN INTO ACCOUNT BY THE OPERATOR

14 AND BOOM LIFTING CAPACITY IS LIMITED BY HYDRAULIC PRESSURE, BOOM ANGLE

15 THE LOAD RATING CHART.

**INFORMATION**

1 REDUCTIONS MUST BE MADE FROM RATED LOADS FOR STOWED JIB, OPTIONAL ATTACHMENTS, HOSES

2 AND LOADS. SEE REDUCTION CHART, WEIGHTS OF SLINGS AND OTHER LOAD HANDLING

3 CRANE LOAD RATING WITH OUTRIGGERS ARE BASED ON OUTRIGGERS AND STABILIZERS EXTENDED

4 LOADS MAY NOT EXCEED 85% OF TIPPING LOAD

**DEFINITIONS**

1 OPERATING RADIUS IS THE HORIZONTAL DISTANCE FROM THE CENTER OF ROTATION TO THE CENTER OF

2 LOADED BOOM ANGLE AS SHOWN IN THE COLUMN CARRIED BY  $\Delta$  IS THE INCLUDED ANGLE BETWEEN

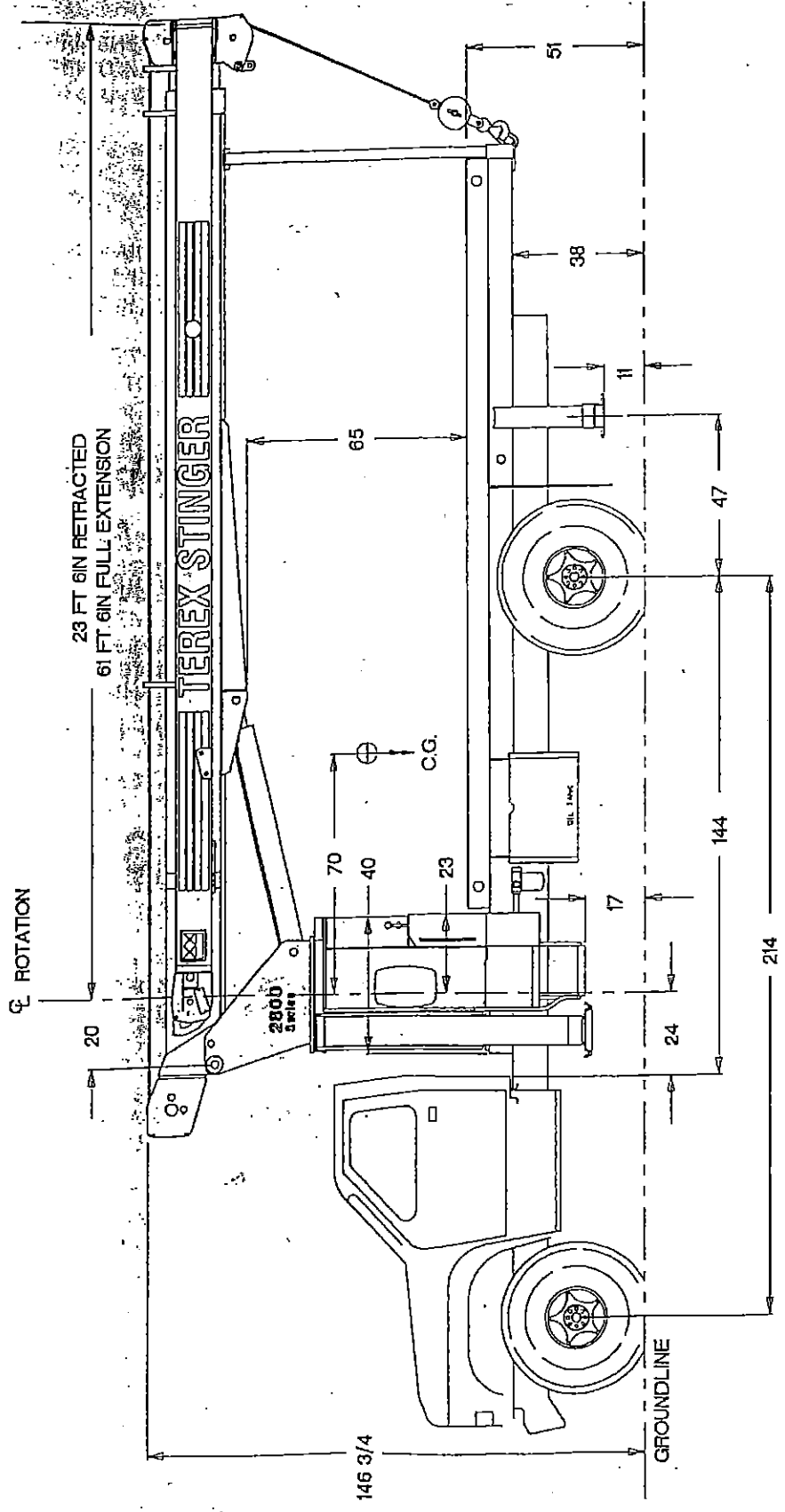
3 RATED RADIUS AND LONGITUDINAL AXIS OF THE BOOM BASE AFTER LIFTING SAID LOAD AT

4 REMOVAL OF THIS PLACARD IS A VIOLATION OF THE LAW

TC-2800 SERIES TRUCK CRANE

HS-14-9

# TC-2863 MODEL SPECIFICATIONS



O-0214

OPERATOR'S MANUAL

WARNING!

The provided information is for reference purposes only and should not be used to operate the crane. The crane's specific operator's manual should be consulted and understood prior to crane operation.