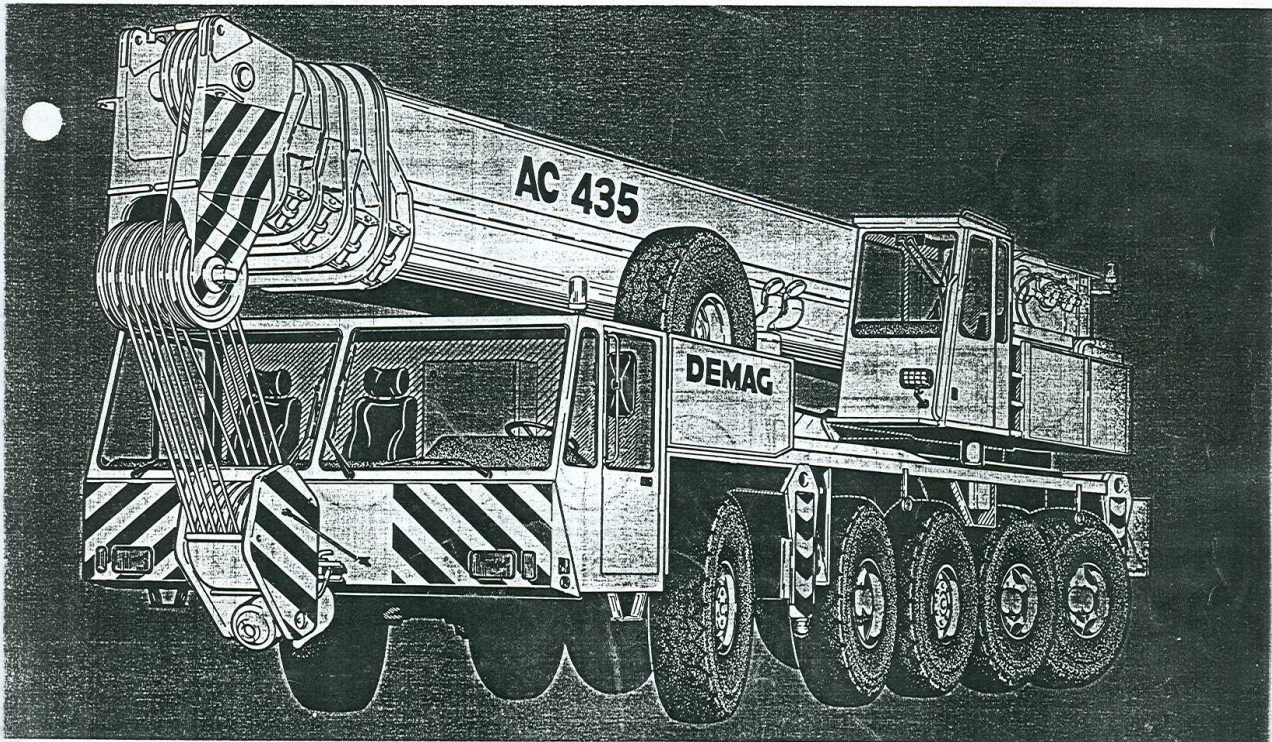


**MANNESMANN  
DEMAG**

**180 ton Telescopic Crane      Demag AC 435**



**WARNING!**

The provided information is for reference purposes only and should not be used to operate the crane. The crane's specific operator's manual should be consulted and understood prior to crane operation.

## Notes to lifting capacity

Lifting capacities do not exceed 75/85% of tipping load.

Weight of hook blocks and slings is part of the load, and is to be deducted from the capacity ratings.

Crane operation is permissible up to a

wind speed of ..... 32 ft/s

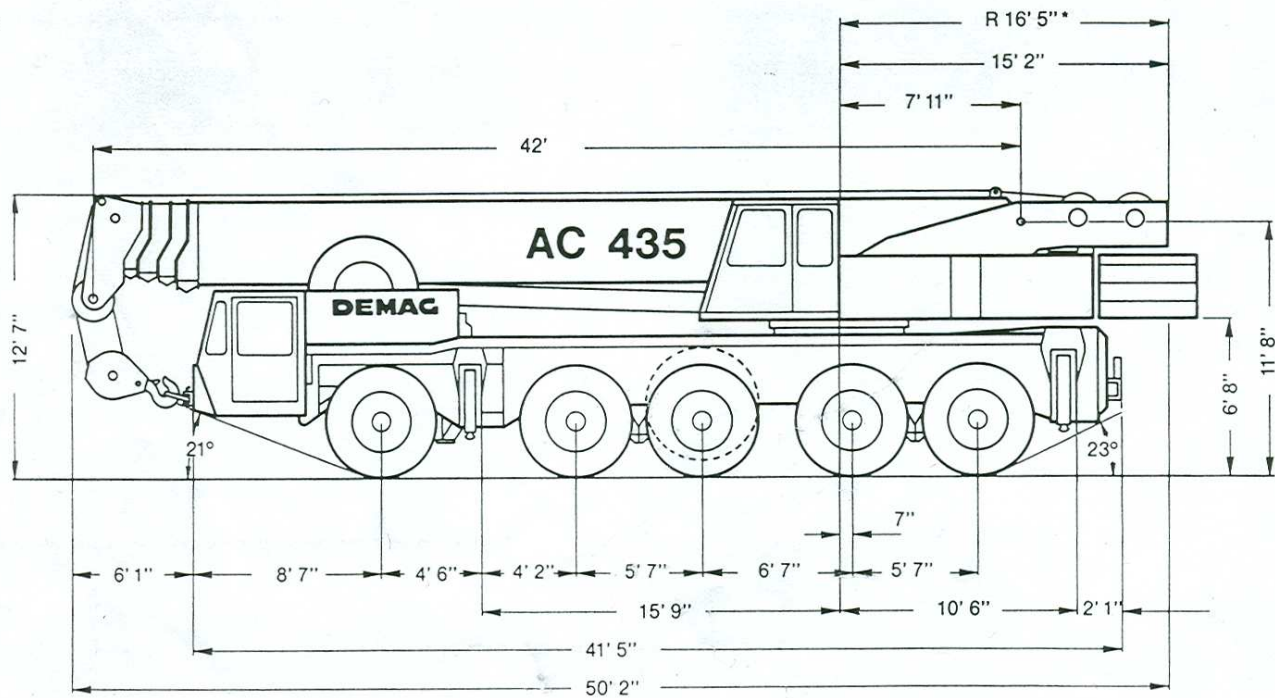
Consult operation manual for further details on wind speed.

All capacities above the parting line are based on structural competence. Capacities below the parting line are based on machine stability.

Crane operation subject to computer charts, only!

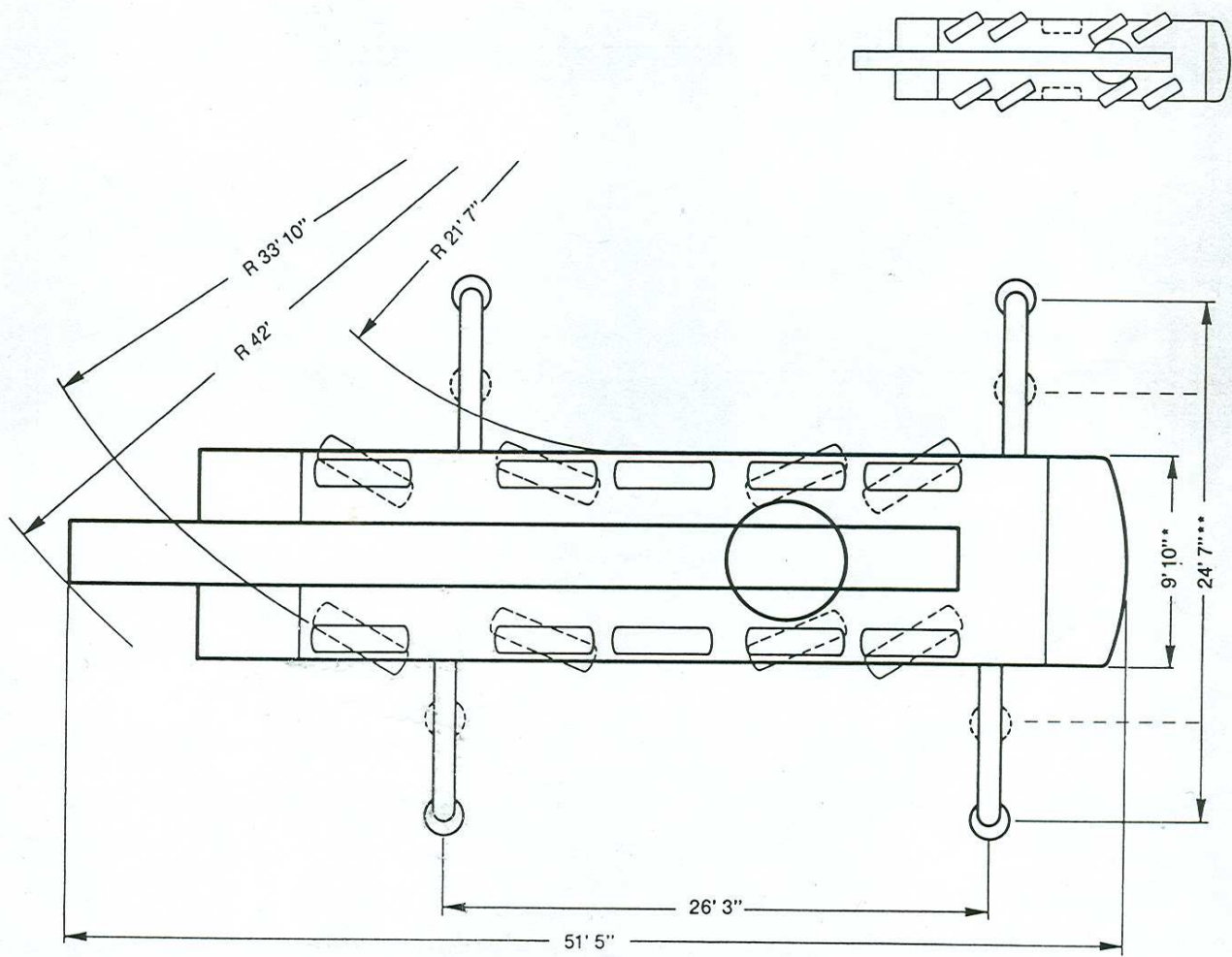
For crane operation consult operation manual first!

# Dimensions



\* Width with more than 59,000 lb of counterweight: 16' 5"; tail swing: 16' 11"

# Dimensions



- \* Width with more than 59,000 lb of counterweight: 16' 5"; tail swing: 16' 11"
- \*\* Duties for outrigger base 16' upon request

# Specifications

## Working speeds (infinitely variable)

Units	Normal speed	High speed	Single line pull	Length of hoist rope
Hoist I	197 ft/min	394 ft/min	16,100 lb	984 ft
Hoist II	197 ft/min	394 ft/min	16,100 lb	853 ft
Slewing	max. 2 rpm			
Telescoping speed	42 ft – 164 ft: 110 s			
Boom elevation	-2° – +83°: 60 s			

## Carrier performance

Travel speeds	
Reverse	0.. 3 mph
Forward	0..43 mph
Gradeability in travel order	max. 60%
Ground clearance	1' 3"

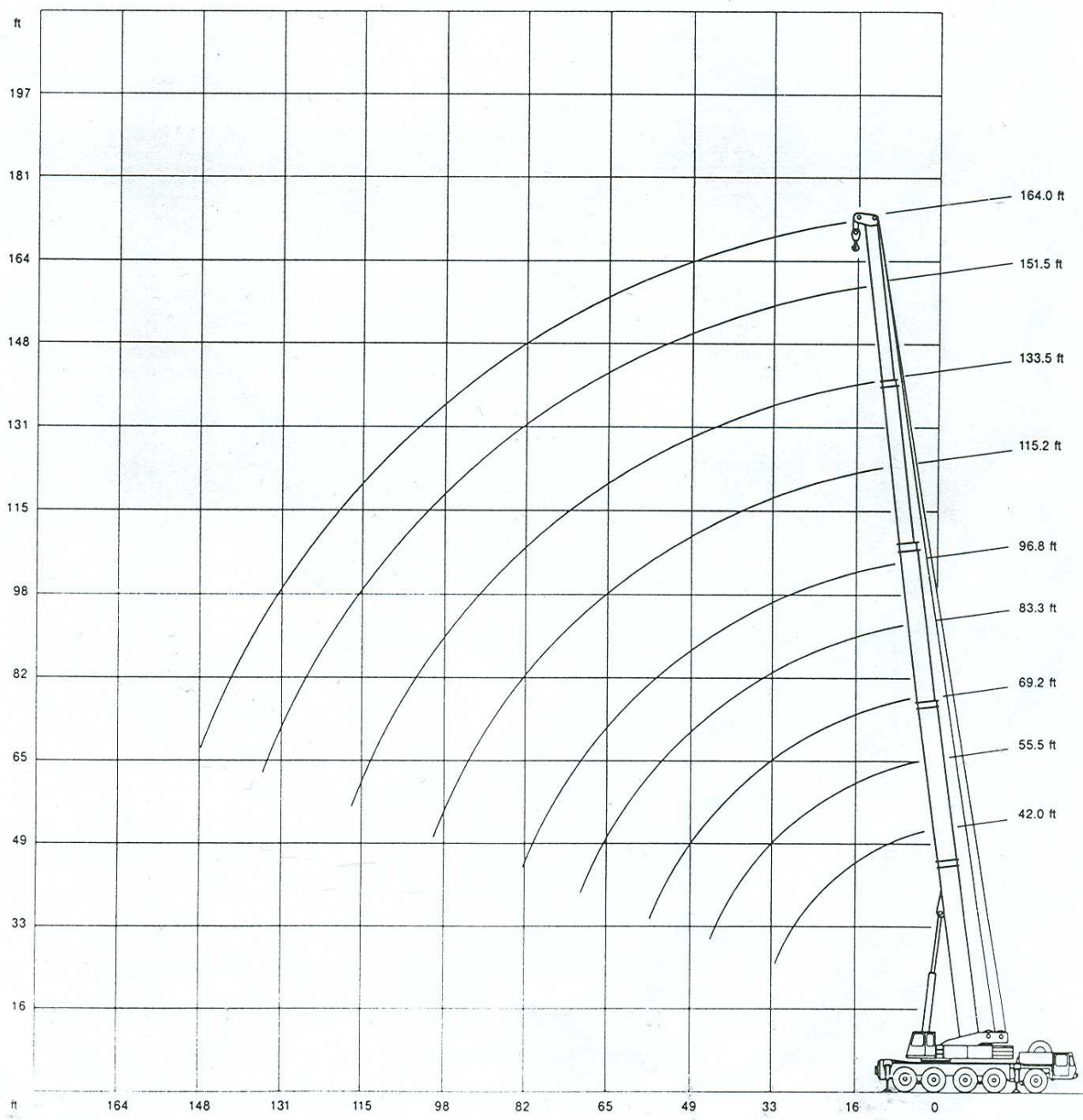
## Hook block/Single line hook

Type	Capacity	Number of sheaves	Number of lines	Weight	"D"
160*)	360,000 lb	11	22	4,400 lb	8 ft
80	194,000 lb	5	11	2,680 lb	8 ft
63	123,000 lb	3	7	2,320 lb	8 ft
25	53,000 lb	1	3	1,670 lb	8 ft
8	17,600 lb	Single line hook		815 lb	6 ft

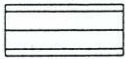



\*) heavy-duty attachment is required, without heavy-duty attachment: capacity 220,000 lb (14 lines)

# Working range main boom



# Lifting capacities main boom in 1,000 lb

97,000 lb   360° 85%

Radius ft	Main boom								
	42.0 ft	55.5 ft*	69.2 ft*	83.3 ft*	96.8 ft*	115.2 ft	133.5 ft	151.5 ft	164.0 ft
10.0	360.0 <sup>1)</sup> / 327.0 <sup>2)</sup>	198.0	-	-	-	-	-	-	-
11.0	308.0 <sup>2)</sup>	198.0	198.0	-	-	-	-	-	-
13.0	277.0	198.0	198.0	165.0	132.0	-	-	-	-
15.0	251.0	198.0	198.0	164.5	132.0	-	-	-	-
16.0	243.0	198.0	198.0	161.0	132.0	83.5	-	-	-
19.0	215.0	198.0	194.5	149.5	132.0	83.5	79.0	-	-
23.0	180.5	178.0	175.0	134.5	123.5	83.5	79.0	61.5	-
26.0	159.5	156.5	155.0	124.5	116.5	83.5	78.0	61.5	46.2
29.0	141.0	139.5	137.5	116.0	109.5	83.5	75.5	61.5	46.2
33.0	-	120.5	118.5	105.5	100.5	83.5	71.5	61.0	46.2
39.0	-	98.0	96.5	91.5	88.0	75.5	66.5	57.5	46.2
46.0	-	-	75.0	77.0	75.5	67.0	60.5	53.3	46.2
52.0	-	-	61.5	63.0	62.5	60.5	55.7	49.2	44.2
59.0	-	-	-	51.2	50.8	54.5	50.5	44.3	41.4
65.0	-	-	-	43.5	42.9	48.4	45.8	40.7	38.6
72.0	-	-	-	-	35.8	41.4	41.5	36.9	35.5
79.0	-	-	-	-	29.9	35.5	35.7	33.6	32.2
85.0	-	-	-	-	-	31.3	31.5	30.7	29.4
92.0	-	-	-	-	-	27.2	27.4	27.4	26.8
98.0	-	-	-	-	-	24.4	24.6	24.4	24.2
105.0	-	-	-	-	-	-	21.3	21.3	20.9
111.0	-	-	-	-	-	-	19.1	18.9	18.7
118.0	-	-	-	-	-	-	-	16.7	16.1
124.0	-	-	-	-	-	-	-	14.9	14.3
131.0	-	-	-	-	-	-	-	13.0	12.4
138.0	-	-	-	-	-	-	-	-	10.9
144.0	-	-	-	-	-	-	-	-	9.5


Boom extension sequence	%								
Tele 1	0	45	90	68	90	60	75	90	100
Tele 2	0	0	0	68	90	60	75	90	100
Tele 3	0	0	0	0	0	60	75	90	100
Tele 4	0	0	0	0	0	60	75	90	100

\* ) Tele 1 pinned  
 1) static test load only  
 2) only over rear!

Duties above 220,000 lb with heavy-duty attachment only.

# Lifting capacities main boom in 1,000 lb

59,500 lb   360° 85%

Radius ft	Main boom													
	42.0 ft	55.5 ft*	69.2 ft*	83.3 ft*	96.8 ft*	115.2 ft	133.5 ft	151.5 ft	164.0 ft	42.0 ft	69.2 ft			
	1,000 lb											1,000 lb		
10.0	316.0	198.0	-	-	-	-	-	-	-	-	-	-	-	-
11.0	299.0	198.0	198.0	-	-	-	-	-	-	-	-	-	-	-
13.0	268.0	198.0	198.0	165.0	77.0	132.0	77.0	-	-	-	-	-	-	-
15.0	244.0	198.0	198.0	164.5	77.0	132.0	77.0	-	-	-	-	-	43.0	39.7
16.0	233.0	198.0	198.0	161.0	77.0	132.0	77.0	83.5	66.0	-	-	-	40.4	37.1
19.0	200.0	191.5	190.5	149.5	77.0	132.0	77.0	83.5	66.0	79.0	41.8	-	34.0	30.5
23.0	164.5	161.5	160.0	134.5	77.0	123.5	76.5	83.5	64.5	79.0	41.8	61.5	27.2	23.7
26.0	143.0	140.0	138.0	124.5	77.0	116.5	73.0	83.5	61.5	78.0	41.8	61.5	23.2	19.9
29.0	<u>125.5</u>	122.5	120.0	116.0	77.0	109.5	69.0	83.5	58.3	75.5	41.8	61.5	19.9	16.6
33.0	-	98.5	96.0	98.0	72.5	97.5	64.5	83.5	54.0	71.5	41.7	61.0	-	12.8
39.0	-	<u>73.5</u>	71.5	73.5	65.5	72.5	57.3	75.5	47.9	66.5	37.3	57.5	-	8.8
46.0	-	-	<u>53.2</u>	54.7	55.4	54.3	50.6	60.5	41.3	60.5	32.5	53.3	-	5.0
52.0	-	-	42.7	<u>44.2</u>	<u>48.0</u>	<u>43.6</u>	45.8	49.8	36.5	50.2	28.9	49.2	-	2.6
59.0	-	-	-	34.6	41.0	34.2	39.7	<u>40.2</u>	32.0	40.4	25.6	40.4	-	-
65.0	-	-	-	28.2	35.8	27.7	<u>35.2</u>	33.9	28.7	<u>34.3</u>	23.5	34.3	-	-
72.0	-	-	-	-	-	21.7	30.5	28.1	26.2	28.3	21.2	<u>28.3</u>	-	-
79.0	-	-	-	-	-	17.0	26.0	23.2	23.5	23.4	19.3	23.4	-	-
85.0	-	-	-	-	-	-	-	19.7	<u>21.9</u>	20.0	18.1	20.0	-	-
92.0	-	-	-	-	-	-	-	16.7	19.7	16.9	16.9	16.9	-	-
98.0	-	-	-	-	-	-	-	14.2	17.5	14.2	<u>15.7</u>	14.2	-	-
105.0	-	-	-	-	-	-	-	-	-	11.9	14.5	11.9	-	-
111.0	-	-	-	-	-	-	-	-	-	10.0	13.5	10.0	-	-
118.0	-	-	-	-	-	-	-	-	-	-	-	8.1	-	-
124.0	-	-	-	-	-	-	-	-	-	-	-	6.7	-	-
131.0	-	-	-	-	-	-	-	-	-	-	-	5.5	-	-
138.0	-	-	-	-	-	-	-	-	-	-	-	3.7	-	-
144.0	-	-	-	-	-	-	-	-	-	-	-	2.7	-	-

**Boom extension sequence**


														%	
Tele 1	0	45	90	68	0	90	0	60	0	75	0	90	100	0	90
Tele 2	0	0	0	68	45	90	60	60	80	75	100	90	100	0	0
Tele 3	0	0	0	0	45	0	60	60	80	75	100	90	100	0	0
Tele 4	0	0	0	0	45	0	60	60	80	75	100	90	100	0	0

\*) Tele 1 pinned

Duties above 220,000 lb with heavy-duty attachment only.



# Lifting capacities main boom in 1,000 lb

42,000 lb  360° 85%

Radius ft	Main boom										over rear		
	42.0 ft	55.5 ft*	69.2 ft*	83.3 ft*	96.8 ft*	115.2 ft	133.5 ft	151.5 ft	164.0 ft	42.0 ft	69.2 ft		
	1,000 lb										1,000 lb		
10.0	310.0	198.0	-	-	-	-	-	-	-	-	-	-	-
11.0	292.0	198.0	198.0	-	-	-	-	-	-	-	-	-	-
13.0	264.0	198.0	198.0	165.0	77.0	132.0	77.0	-	-	-	-	-	-
15.0	237.0	198.0	198.0	164.5	77.0	132.0	77.0	-	-	-	-	36.9	33.6
16.0	224.0	198.0	198.0	161.0	77.0	132.0	77.0	83.5	66.0	-	-	34.6	31.1
19.0	190.0	183.0	182.0	149.5	77.0	132.0	77.0	83.5	66.0	79.0	41.8	28.6	25.3
23.0	152.0	148.5	146.5	134.5	77.0	123.5	76.5	83.5	64.5	79.0	41.8	22.4	18.9
26.0	127.0	122.5	119.5	121.0	77.0	116.5	73.0	83.5	61.5	78.0	41.8	19.0	15.4
29.0	104.5	100.0	97.0	99.5	77.0	98.0	69.0	83.5	58.3	75.5	41.8	15.9	12.4
33.0	-	78.5	76.0	78.0	72.5	77.0	64.5	83.0	54.0	71.5	41.7	-	9.1
39.0	-	58.1	55.7	57.7	65.0	56.8	57.3	64.0	47.9	63.5	37.3	-	5.5
46.0	-	-	39.5	41.3	49.5	40.9	50.1	47.5	41.3	47.9	32.5	-	2.1
52.0	-	-	30.5	32.2	40.2	31.4	40.6	38.2	36.3	38.4	28.9	-	-
59.0	-	-	-	23.6	32.0	23.2	32.4	30.0	31.7	30.2	25.6	-	-
65.0	-	-	-	18.7	26.7	17.9	27.2	24.7	27.7	25.0	23.5	-	-
72.0	-	-	-	-	-	13.1	22.6	19.5	23.0	19.7	20.7	-	-
79.0	-	-	-	-	-	9.3	18.5	15.5	19.0	15.7	19.0	-	-
85.0	-	-	-	-	-	-	-	12.7	16.0	12.9	16.4	-	-
92.0	-	-	-	-	-	-	-	10.1	13.4	10.3	13.8	-	-
98.0	-	-	-	-	-	-	-	8.2	11.5	8.3	11.8	-	-
105.0	-	-	-	-	-	-	-	-	-	6.3	9.9	-	-
111.0	-	-	-	-	-	-	-	-	-	4.7	8.3	-	-
118.0	-	-	-	-	-	-	-	-	-	-	3.3	-	-

**Boom extension sequence**


													%		
Tele 1	0	45	90	68	0	90	0	60	0	75	0	90	100	0	90
Tele 2	0	0	0	68	45	90	60	60	80	75	100	90	100	0	0
Tele 3	0	0	0	0	45	0	60	60	80	75	100	90	100	0	0
Tele 4	0	0	0	0	45	0	60	60	80	75	100	90	100	0	0

\*) Tele 1 pinned

Duties above 220,000 lb with heavy-duty attachment only.

# Lifting capacities main boom in 1,000 lb

**24,200 lb**   **360°** **85%**

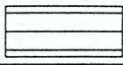

Radius ft	Main boom										 over rear		
	42.0 ft	55.5 ft*	69.2 ft*	83.3 ft*	96.8 ft*	115.2 ft	133.5 ft	151.5 ft	164.0 ft	42.0 ft	69.2 ft		
	1,000 lb										1,000 lb		
10.0	303.0	198.0	-	-	-	-	-	-	-	-	-	-	-
11.0	287.0	198.0	198.0	-	-	-	-	-	-	-	-	-	-
13.0	257.0	198.0	198.0	165.0	77.0	132.0	77.0	-	-	-	-	-	-
15.0	230.0	198.0	198.0	164.5	77.0	132.0	77.0	-	-	-	-	-	33.1 29.4
16.0	216.0	198.0	198.0	161.0	77.0	132.0	77.0	83.5	66.0	-	-	-	30.9 27.3
19.0	180.5	175.0	173.5	149.5	77.0	132.0	77.0	83.5	66.0	77.0	41.8	-	25.2 21.7
23.0	138.0	133.0	129.5	132.5	77.0	123.0	76.5	83.5	64.5	77.0	41.8	57.3	19.3 15.8
26.0	<u>108.5</u>	<u>84.0</u>	100.5	103.5	77.0	102.0	73.0	83.5	61.5	76.0	41.8	57.3	42.9 16.1 12.4
29.0	88.0	<u>84.0</u>	81.0	83.5	77.0	82.5	69.0	83.5	58.3	74.0	41.8	55.2	42.9 13.2 9.7
33.0	-	<u>64.5</u>	<u>62.0</u>	<u>64.0</u>	<u>72.0</u>	<u>63.5</u>	64.5	72.0	54.0	70.5	41.7	52.3	42.9 - 6.7
39.0	-	46.1	43.4	45.4	54.4	45.0	<u>54.8</u>	52.5	47.9	52.9	37.3	49.9	42.9 - 3.2
46.0	-	-	29.8	31.8	40.0	31.2	40.6	38.0	41.3	<u>38.4</u>	32.5	<u>38.4</u>	38.0 - -
52.0	-	-	21.8	23.6	31.9	22.7	32.6	29.9	<u>33.2</u>	30.2	28.9	30.2	<u>29.9</u> - -
59.0	-	-	-	16.3	24.9	15.7	25.6	22.7	26.2	23.2	25.6	23.2	22.9 - -
65.0	-	-	-	12.1	20.3	9.4	21.1	18.1	21.6	18.3	<u>22.1</u>	18.3	18.1 - -
72.0	-	-	-	-	-	7.1	16.8	13.7	17.3	13.9	17.7	13.9	13.7 - -
79.0	-	-	-	-	-	4.3	13.3	10.4	13.7	10.6	14.2	10.6	10.2 - -
85.0	-	-	-	-	-	-	-	8.0	11.5	8.2	12.0	8.2	8.0 - -
92.0	-	-	-	-	-	-	-	5.9	9.2	6.1	9.6	5.9	5.6 - -
98.0	-	-	-	-	-	-	-	4.3	7.6	4.3	7.8	4.3	4.0 - -
105.0	-	-	-	-	-	-	-	-	-	2.6	6.1	2.6	2.2 - -
111.0	-	-	-	-	-	-	-	-	-	-	4.9	-	- -


Boom extension sequence													%		
Tele 1	0	45	90	68	0	90	0	60	0	75	0	90	100	0	90
Tele 2	0	0	0	68	45	90	60	60	80	75	100	90	100	0	0
Tele 3	0	0	0	0	45	0	60	60	80	75	100	90	100	0	0
Tele 4	0	0	0	0	45	0	60	60	80	75	100	90	100	0	0

\*) Tele 1 pinned

Duties above 220,000 lb with heavy-duty attachment only.

# Lifting capacities main boom in 1,000 lb

0 lb   360° 85%

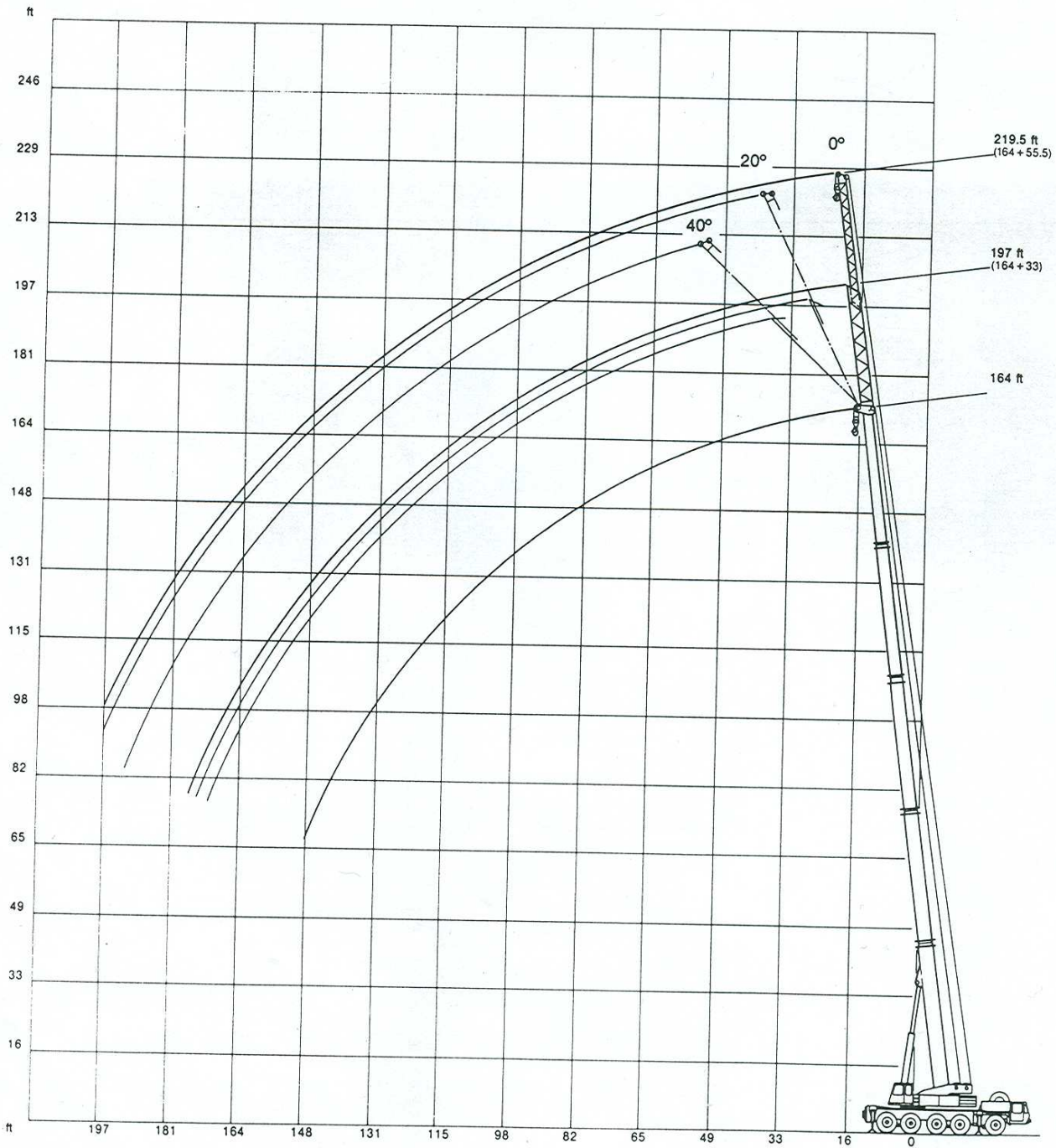
Radius ft	Main boom											 over rear			
	42.0 ft	55.5 ft*	69.2 ft*	83.3 ft*	96.8 ft*	115.2 ft	133.5 ft	151.5 ft	164.0 ft	42.0 ft	69.2 ft				
1,000 lb												1,000 lb			
10.0	297.0	198.0	-	-	-	-	-	-	-	-	-	-	-	-	
11.0	279.0	198.0	198.0	-	-	-	-	-	-	-	-	-	-	-	
13.0	246.0	198.0	198.0	165.0	77.0	132.0	77.0	-	-	-	-	-	-	-	
15.0	216.0	197.5	197.0	164.5	77.0	132.0	77.0	-	-	-	-	-	24.8	21.1	
16.0	201.0	193.5	192.0	161.0	77.0	132.0	77.0	83.5	66.0	-	-	-	22.8	19.1	
19.0	<u>143.5</u>	<u>138.5</u>	<u>135.0</u>	<u>131.5</u>	77.0	<u>125.0</u>	77.0	83.5	66.0	74.5	41.8	-	18.0	14.1	
23.0	91.5	86.5	84.0	86.5	77.0	85.5	76.5	83.5	64.5	74.5	41.8	52.9	12.9	9.2	
26.0	70.0	65.0	62.5	65.0	<u>74.5</u>	64.5	73.0	<u>72.5</u>	61.5	<u>72.5</u>	41.8	52.9	41.8	10.1	6.4
29.0	55.2	50.7	48.0	50.3	60.0	49.8	<u>60.5</u>	58.2	58.3	58.6	41.8	<u>52.9</u>	41.8	7.8	3.9
33.0	-	37.5	34.9	37.0	45.8	36.6	46.7	43.9	<u>47.6</u>	44.3	41.6	41.9	<u>38.3</u>	-	-
39.0	-	25.2	23.2	25.0	32.9	24.1	33.4	31.0	34.1	31.4	<u>34.6</u>	31.3	30.8	-	-
46.0	-	-	14.2	15.8	23.3	15.3	23.7	21.3	24.6	21.7	25.0	21.7	21.5	-	-
52.0	-	-	9.0	10.7	17.8	10.3	18.3	16.0	19.1	16.3	19.6	16.3	16.1	-	-
59.0	-	-	-	5.9	13.2	5.1	13.7	11.5	14.3	11.7	15.0	11.7	11.2	-	-
65.0	-	-	-	2.7	10.4	-	10.8	8.6	11.5	8.8	11.9	8.8	8.2	-	-
72.0	-	-	-	-	-	-	8.2	5.3	8.6	5.5	8.8	5.5	5.1	-	-
79.0	-	-	-	-	-	-	5.8	3.0	6.3	3.2	6.7	3.2	2.7	-	-
85.0	-	-	-	-	-	-	-	-	4.7	-	4.9	-	-	-	-
92.0	-	-	-	-	-	-	-	-	2.8	-	3.2	-	-	-	-

Boom extension sequence														%	
Tele 1	0	45	90	68	0	90	0	60	0	75	0	90	100	0	90
Tele 2	0	0	0	68	45	90	60	60	80	75	100	90	100	0	0
Tele 3	0	0	0	0	45	0	60	60	80	75	100	90	100	0	0
Tele 4	0	0	0	0	45	0	60	60	80	75	100	90	100	0	0

\*) Tele 1 pinned

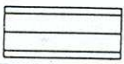

Duties above 220,000 lb with heavy-duty attachment only.

# Working range main boom extension

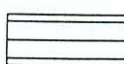



# Lifting capacities main boom extension in 1,000 lb

Main boom: 164 ft

**97,000 lb**   **360° 85%**

Radius ft	Lattice-extension					
	33.0 ft			55.5 ft		
	0°	20°	40°	0°	20°	40°
	1,000 lb			1,000 lb		
39.0	24.9	-	-	-	-	-
46.0	24.4	19.8	-	18.7	-	-
52.0	24.0	18.4	-	18.5	-	-
59.0	23.1	15.6	16.0	17.4	11.9	-
65.0	22.3	15.4	15.4	16.8	11.5	-
72.0	21.4	14.3	15.2	16.1	11.0	8.6
79.0	20.4	13.2	13.8	15.1	11.7	8.1
85.0	19.2	12.5	12.8	14.1	10.1	7.9
92.0	18.2	11.8	11.6	13.6	9.6	7.7
98.0	17.2	11.2	10.8	13.0	9.2	7.5
105.0	16.3	10.8	10.1	12.5	8.8	7.2
111.0	15.5	9.9	9.7	11.7	8.6	7.0
118.0	14.5	9.4	9.0	11.2	7.9	6.8
124.0	13.7	9.0	8.6	10.8	7.5	6.4
131.0	12.3	8.1	7.9	10.1	7.2	6.1
138.0	10.7	7.7	7.0	9.4	6.8	5.9
144.0	9.3	7.2	6.2	9.0	6.2	5.7
151.0	7.9	6.8	5.5	8.5	5.7	5.2
157.0	6.9	6.2	-	7.9	5.3	5.0
164.0	5.7	5.7	-	7.4	4.4	4.4
170.0	4.9	4.9	-	6.4	4.0	4.0
177.0	3.7	3.9	-	5.5	3.5	-
184.0	-	-	-	4.8	-	-
190.0	-	-	-	4.0	-	-

**59,500 lb**   **360° 85%**

Radius ft	Lattice-extension					
	33.0 ft			55.5 ft		
	0°	20°	40°	0°	20°	40°
	1,000 lb			1,000 lb		
39.0	24.9	-	-	-	-	-
46.0	24.4	19.8	-	18.7	-	-
52.0	24.0	18.4	-	18.5	-	-
59.0	23.1	15.6	16.0	17.4	11.9	-
65.0	22.3	15.4	15.4	16.8	11.5	-
72.0	21.4	14.3	15.2	16.1	11.0	8.6
79.0	20.4	13.2	13.8	15.1	10.7	8.1
85.0	19.2	12.5	12.8	14.5	10.1	7.9
92.0	16.9	11.8	11.6	13.6	9.6	7.7
98.0	14.5	11.2	10.8	13.0	9.2	7.5
105.0	11.6	10.8	10.1	12.5	8.8	7.2
111.0	9.8	9.9	9.7	11.7	8.6	7.0
118.0	7.9	9.2	9.0	9.9	7.9	6.8
124.0	6.3	7.6	8.0	8.3	7.5	6.4
131.0	5.1	6.0	6.4	6.8	7.2	6.1
138.0	3.7	4.3	5.0	5.4	6.8	5.9
144.0	2.4	3.3	3.8	4.4	6.0	5.7
151.0	-	2.1	2.4	3.5	4.8	5.2
157.0	-	-	-	2.5	3.8	4.2
164.0	-	-	-	-	2.6	3.3
170.0	-	-	-	-	-	2.3

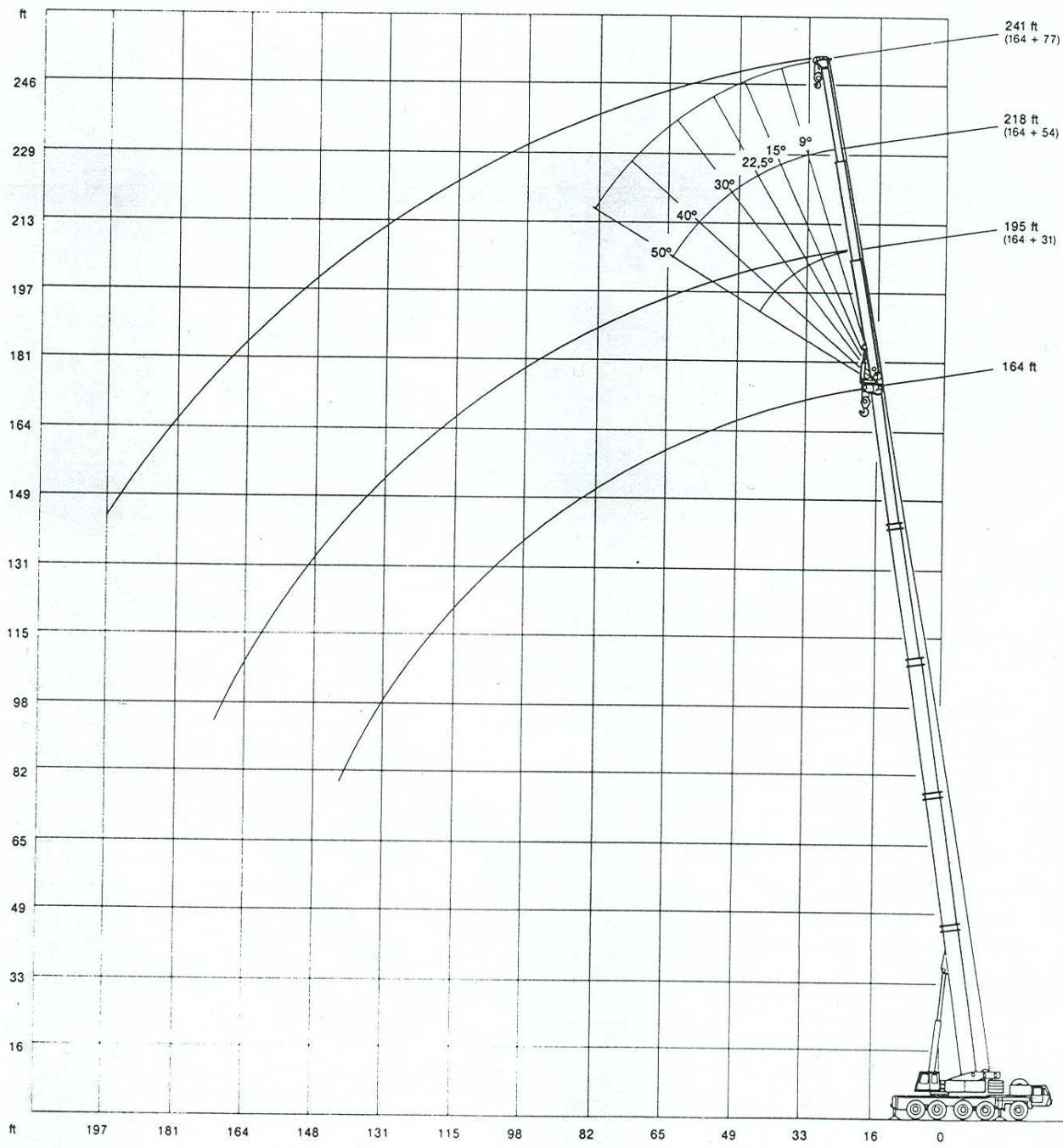
**42,000 lb**   **360° 85%**

Radius ft	Lattice-extension					
	33.0 ft			55.5 ft		
	0°	20°	40°	0°	20°	40°
	1,000 lb			1,000 lb		
39.0	24.9	-	-	-	-	-
46.0	24.4	19.8	-	18.7	-	-
52.0	24.0	18.4	-	18.5	-	-
59.0	23.1	15.6	16.0	17.4	11.9	-
65.0	22.3	15.4	15.4	16.8	11.5	-
72.0	21.4	14.3	15.2	16.1	11.0	8.6
79.0	17.2	13.2	13.8	15.1	10.7	8.1
85.0	14.4	12.5	12.8	14.5	10.1	7.9
92.0	11.4	11.8	11.6	12.9	9.6	7.7
98.0	9.4	10.8	10.8	10.9	9.2	7.5
105.0	7.0	8.8	9.6	9.0	8.8	7.2
111.0	5.6	7.0	7.6	7.4	8.6	7.0
118.0	3.7	5.1	5.7	5.7	7.9	6.8
124.0	2.5	3.6	4.3	4.5	6.3	6.4
131.0	-	2.2	2.7	3.3	5.1	6.1
138.0	-	-	-	2.1	3.7	4.8
144.0	-	-	-	-	2.4	3.6
151.0	-	-	-	-	-	2.4

**24,200 t**   **360° 85%**

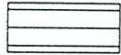

Radius ft	Lattice-extension					
	33.0 ft			55.5 ft		
	0°	20°	40°	0°	20°	40°
	1,000 lb			1,000 lb		
39.0	24.9	-	-	-	-	-
46.0	24.4	19.8	-	18.7	-	-
52.0	24.0	18.4	-	18.5	-	-
59.0	22.5	15.6	16.0	17.4	11.9	-
65.0	17.8	15.4	15.4	16.8	11.5	-
72.0	13.7	14.3	15.2	14.8	11.0	8.6
79.0	10.6	12.8	13.8	11.5	10.7	8.1
85.0	8.0	10.2	11.9	9.3	10.1	7.9
92.0	5.9	7.6	9.4	7.2	9.6	7.7
98.0	4.0	5.8	7.2	5.6	8.2	7.5
105.0	2.4	3.9	5.0	3.9	6.3	7.2
111.0	-	2.5	3.4	2.5	5.1	7.0
118.0	-	-	-	-	3.5	5.5
124.0	-	-	-	-	2.5	4.1
131.0	-	-	-	-	-	2.6

# Working range hydraulic fly jib

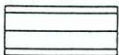



# Lifting capacities hydraulic fly jib in 1,000 lb

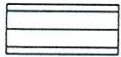

Main boom: 164 ft

**97,000 lb**   **360° 75%**

Radius ft	Fly jib 31.0 ft						
	2.5°	9.0°	15.0°	22.5°	30.0°	40.0°	50.0°
	1,000 lb						
46	16.5	16.5	-	-	-	-	-
52	15.1	15.1	15.0	15.0	15.0	-	-
59	13.6	13.6	13.6	13.6	13.6	13.6	13.6
65	12.6	12.6	12.6	12.6	12.6	12.6	12.6
72	11.4	11.4	11.4	11.4	11.4	11.4	11.4
79	10.5	10.5	10.5	10.5	10.5	10.5	10.5
85	9.9	9.9	9.9	9.9	9.9	9.9	9.9
92	9.0	9.0	9.0	9.0	9.0	9.0	9.0
98	8.4	8.4	8.4	8.4	8.4	8.4	8.4
105	7.7	7.7	7.7	7.7	7.7	7.7	7.7
111	7.1	7.1	7.1	6.9	6.9	6.9	6.9
118	6.6	6.6	6.6	6.1	6.1	6.1	-
124	6.0	6.0	6.0	5.7	5.7	5.7	-
131	5.3	5.5	5.5	5.3	5.3	5.3	-
138	4.8	5.0	5.0	4.6	4.6	-	-
144	4.4	4.6	4.6	4.4	4.4	-	-
151	3.5	3.7	3.9	4.1	4.1	-	-
157	2.5	2.7	2.9	2.9	-	-	-
164	-	-	-	-	-	-	-
170	-	-	-	-	-	-	-
177	-	-	-	-	-	-	-

**97,000 lb**   **360° 75%**

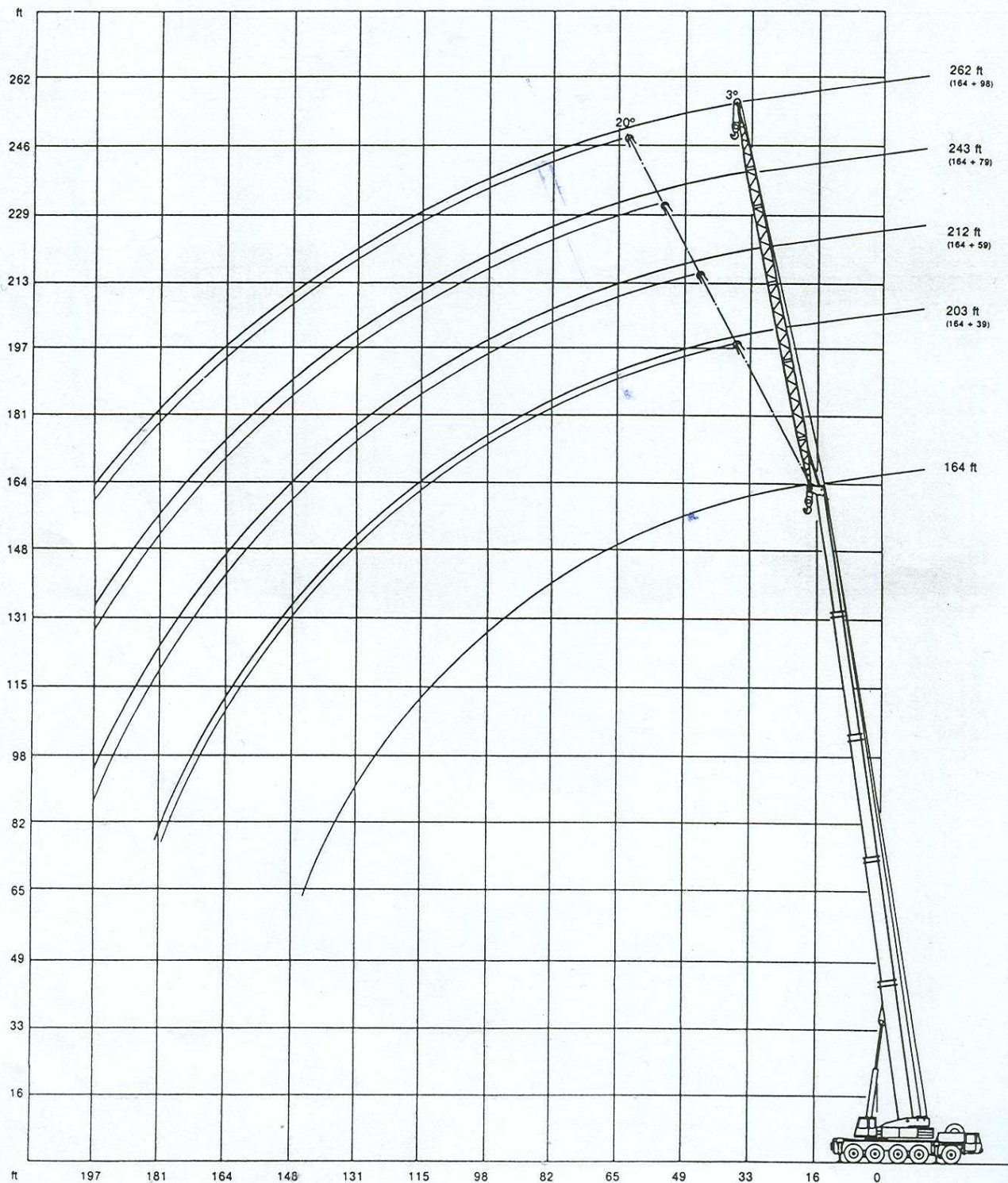
Radius ft	Fly jib 54.0 ft						
	2.5°	9.0°	15.0°	22.5°	30.0°	40.0°	50.0°
	1,000 lb						
46	13.2	-	-	-	-	-	-
52	12.2	12.1	-	-	-	-	-
59	11.2	11.2	11.2	-	-	-	-
65	10.6	10.6	10.6	10.6	-	-	-
72	9.9	9.9	9.9	9.9	9.9	9.0	-
79	9.2	9.2	9.2	9.2	9.2	8.5	7.4
85	8.8	8.8	8.8	8.8	8.8	8.1	7.2
92	8.1	8.1	8.1	8.1	8.1	7.7	7.2
98	7.5	7.5	7.5	7.5	7.5	7.3	7.0
105	7.0	7.0	7.0	7.0	7.0	6.8	6.8
111	6.6	6.6	6.6	6.6	6.6	6.6	6.6
118	6.1	6.1	6.1	5.9	5.9	5.9	5.9
124	5.7	5.7	5.7	5.5	5.5	5.5	5.5
131	5.0	5.0	5.0	5.0	5.0	5.0	5.0
138	4.6	4.6	4.6	4.6	4.6	4.6	-
144	4.2	4.2	4.2	4.2	4.2	4.2	-
151	3.7	3.7	3.7	3.9	3.9	3.9	-
157	3.5	3.5	3.5	3.7	3.7	-	-
164	3.3	3.3	3.3	3.3	3.3	-	-
170	2.7	2.9	2.9	2.9	2.9	-	-
177	-	2.0	2.2	2.4	-	-	-

**97,000 lb**   **360° 75%**

Radius ft	Fly jib 77.0 ft						
	2.5°	9.0°	15.0°	22.5°	30.0°	40.0°	50.0°
	1,000 lb						
59	9.0	9.0	-	-	-	-	-
65	8.2	8.2	8.1	-	-	-	-
72	7.7	7.7	7.7	-	-	-	-
79	7.4	7.4	7.4	6.1	-	-	-
85	7.2	7.2	7.2	5.9	5.9	-	-
92	7.0	7.0	7.0	5.5	5.5	4.8	-
98	6.6	6.6	6.6	5.3	5.3	4.6	4.1
105	6.3	6.1	6.1	5.0	5.0	4.6	4.1
111	5.9	5.7	5.7	4.8	4.8	4.4	4.1
118	5.7	5.2	5.2	4.6	4.6	4.4	4.1
124	5.3	5.0	5.0	4.4	4.4	4.2	3.9
131	4.8	4.6	4.6	4.1	4.1	3.9	3.9
138	4.3	4.3	4.3	3.9	3.9	3.7	3.7
144	3.9	3.9	3.9	3.7	3.7	3.5	3.5
151	3.7	3.7	3.7	3.3	3.3	3.0	-
157	3.5	3.5	3.5	2.8	2.8	2.6	-
164	3.0	3.0	3.0	2.6	2.6	2.6	-
170	2.8	2.8	2.8	2.6	2.6	2.4	-
177	2.6	2.6	2.6	2.4	2.4	2.2	-
184	2.6	2.4	2.4	2.1	2.1	-	-
190	2.2	2.2	2.2	1.9	1.9	-	-
197	-	-	-	1.9	1.9	-	-

Duties for other counterweight combinations and main boom lengths on request

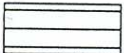
# Working range fixed fly jib





# Lifting capacities fixed fly jib in 1,000 lb

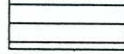
Main boom: 164 ft

**97,000 lb**  **360° 85%**

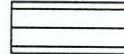
Radius ft	Fixed fly jib			
	39.0 ft		59.0 ft	
	3°		3°	
	1,000 lb			
33	24.2	-	-	-
39	23.8	-	18.7	-
46	22.9	-	17.8	-
52	21.9	-	17.2	-
59	20.9	-	16.7	-
65	19.9	-	15.9	-
72	18.9	-	15.2	-
79	17.6	-	14.5	-
85	16.7	-	13.7	-
92	15.6	-	12.9	-
98	14.8	-	12.1	-
105	13.8	-	11.4	-
111	13.2	-	10.8	-
118	12.3	-	10.1	-
124	11.7	-	9.5	-
131	11.0	-	9.0	-
138	10.3	-	8.1	-
144	9.7	-	7.7	-
151	9.2	-	7.2	-
157	8.0	-	7.0	-
164	7.0	-	6.3	-
170	6.0	-	6.1	-
177	4.8	-	5.3	-
184	-	-	4.3	-
190	-	-	3.7	-

**59,500 lb**  **360° 85%**

Radius ft	Fixed fly jib							
	39.0 ft		59.0 ft		79.0 ft		98.0 ft	
	3°	20°	3°	20°	3°	20°	3°	20°
	1,000 lb							
33	24.2	-	-	-	-	-	-	-
39	23.8	-	18.7	-	-	-	-	-
46	22.9	-	17.8	-	13.8	-	-	-
52	21.9	17.4	17.2	-	13.2	-	9.9	-
59	20.9	16.5	16.7	12.5	12.7	-	9.7	-
65	19.9	15.7	15.9	12.1	11.9	-	9.3	-
72	18.9	15.0	15.2	11.6	11.4	8.8	8.8	-
79	17.6	14.2	14.5	11.2	10.9	8.3	8.1	-
85	16.7	13.2	13.7	10.8	10.1	8.1	7.9	6.1
92	15.6	12.1	12.9	10.1	9.6	7.7	7.4	5.9
98	14.8	11.5	12.1	9.7	9.2	7.5	7.0	5.7
105	13.2	10.8	11.4	9.2	8.8	7.2	6.8	5.5
111	11.4	9.9	10.8	8.6	8.2	6.8	6.4	5.1
118	9.2	9.2	9.9	8.1	7.7	6.6	5.9	4.8
124	7.8	8.4	8.3	7.7	7.3	6.2	5.5	4.6
131	6.2	7.3	7.0	7.2	6.8	5.7	5.0	4.4
138	4.8	5.9	5.2	6.7	6.1	5.2	4.8	4.1
144	3.8	4.7	4.4	5.5	4.9	4.8	4.4	3.9
151	2.6	3.2	3.2	4.3	3.9	4.6	4.1	3.3
157	-	2.4	2.4	3.3	2.9	4.2	3.3	3.1
164	-	-	-	2.4	-	3.3	2.4	2.8
170	-	-	-	-	-	2.7	-	2.4
177	-	-	-	-	-	-	-	2.2

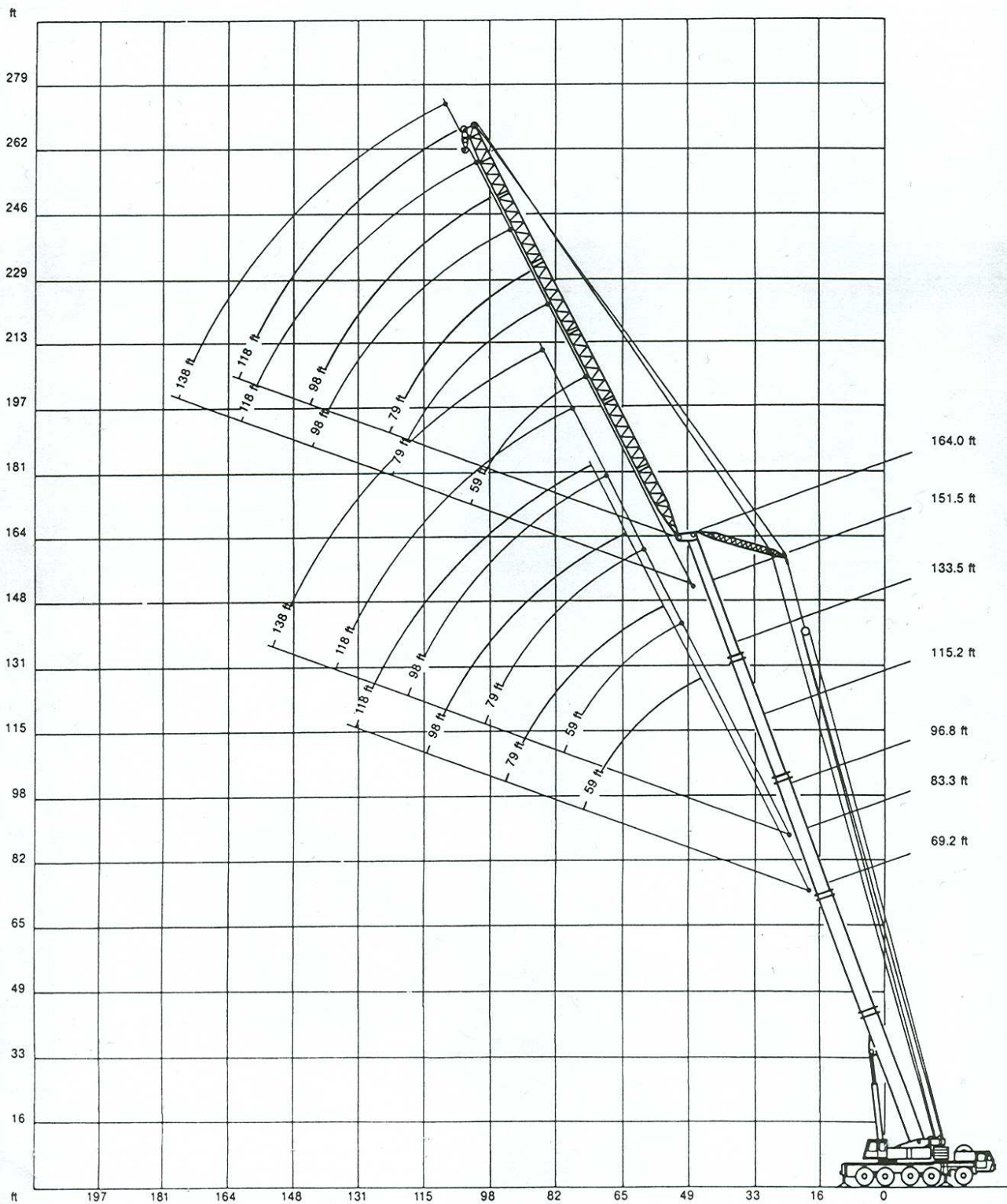
**42,000 lb**  **360° 85%**

Radius ft	Fixed fly jib							
	39.0 ft		59.0 ft		79.0 ft		98.0 ft	
	3°	20°	3°	20°	3°	20°	3°	20°
	1,000 lb							
33	24.2	-	-	-	-	-	-	-
39	23.8	-	18.7	-	-	-	-	-
46	22.9	-	17.8	-	13.8	-	-	-
52	21.9	17.4	17.2	-	13.2	-	9.9	-
59	20.9	16.5	16.7	12.5	12.7	-	9.7	-
65	19.9	15.7	15.9	12.1	11.9	-	9.3	-
72	18.9	15.0	15.2	11.6	11.4	8.8	8.8	-
79	17.5	14.2	14.5	11.2	10.9	8.3	8.1	-
85	14.6	13.2	13.7	10.8	10.1	8.1	7.9	6.1
92	11.8	12.1	11.8	10.1	9.6	7.7	7.4	5.9
98	9.8	11.5	10.0	9.7	9.2	7.5	7.0	5.7
105	7.7	9.2	7.9	9.2	8.1	7.2	6.8	5.5
111	6.1	7.4	6.5	8.6	6.9	6.8	6.4	5.1
118	4.4	5.7	4.8	7.0	5.1	6.6	5.0	4.8
124	3.2	4.3	3.8	5.4	4.0	6.2	4.0	4.6
131	-	2.9	2.4	4.2	2.9	5.1	2.9	4.4
138	-	-	-	2.8	-	3.9	-	4.1
144	-	-	-	-	-	2.9	-	3.3
151	-	-	-	-	-	-	-	2.4

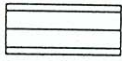
**24,200 lb**  **360° 85%**

Radius ft	Fixed fly jib							
	39.0 ft		59.0 ft		79.0 ft		98.0 ft	
	3°	20°	3°	20°	3°	20°	3°	20°
	1,000 lb							
33	24.2	-	-	-	-	-	-	-
39	23.8	-	18.7	-	-	-	-	-
46	22.9	-	17.8	-	13.8	-	-	-
52	21.9	17.4	17.2	-	13.2	-	9.9	-
59	20.9	16.5	16.7	12.5	12.7	-	9.7	-
65	19.1	15.7	15.9	12.1	11.9	-	9.3	-
72	15.3	15.0	15.2	11.6	11.4	8.8	8.8	-
79	11.8	14.2	11.8	11.2	10.9	8.3	8.1	-
85	9.5	11.5	9.5	10.8	9.7	8.1	7.9	6.1
92	7.2	9.2	7.4	10.1	7.4	7.7	7.4	5.9
98	5.4	7.4	5.4	8.2	5.8	7.5	5.8	5.7
105	3.7	5.5	3.9	6.6	4.1	7.2	4.1	5.5
111	2.5	4.0	2.7	4.7	2.7	5.8	2.7	5.1
118	-	2.4	-	3.3	-	4.2	-	4.8
124	-	-	-	2.3	-	3.0	-	3.8
131	-	-	-	-	-	-	-	2.4

# Working range luffing fly jib, main boom 70°

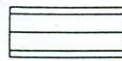


# Lifting capacities luffing fly jib, main boom 70°, in 1,000 lb

**59,500 lb**  **360° 75%**

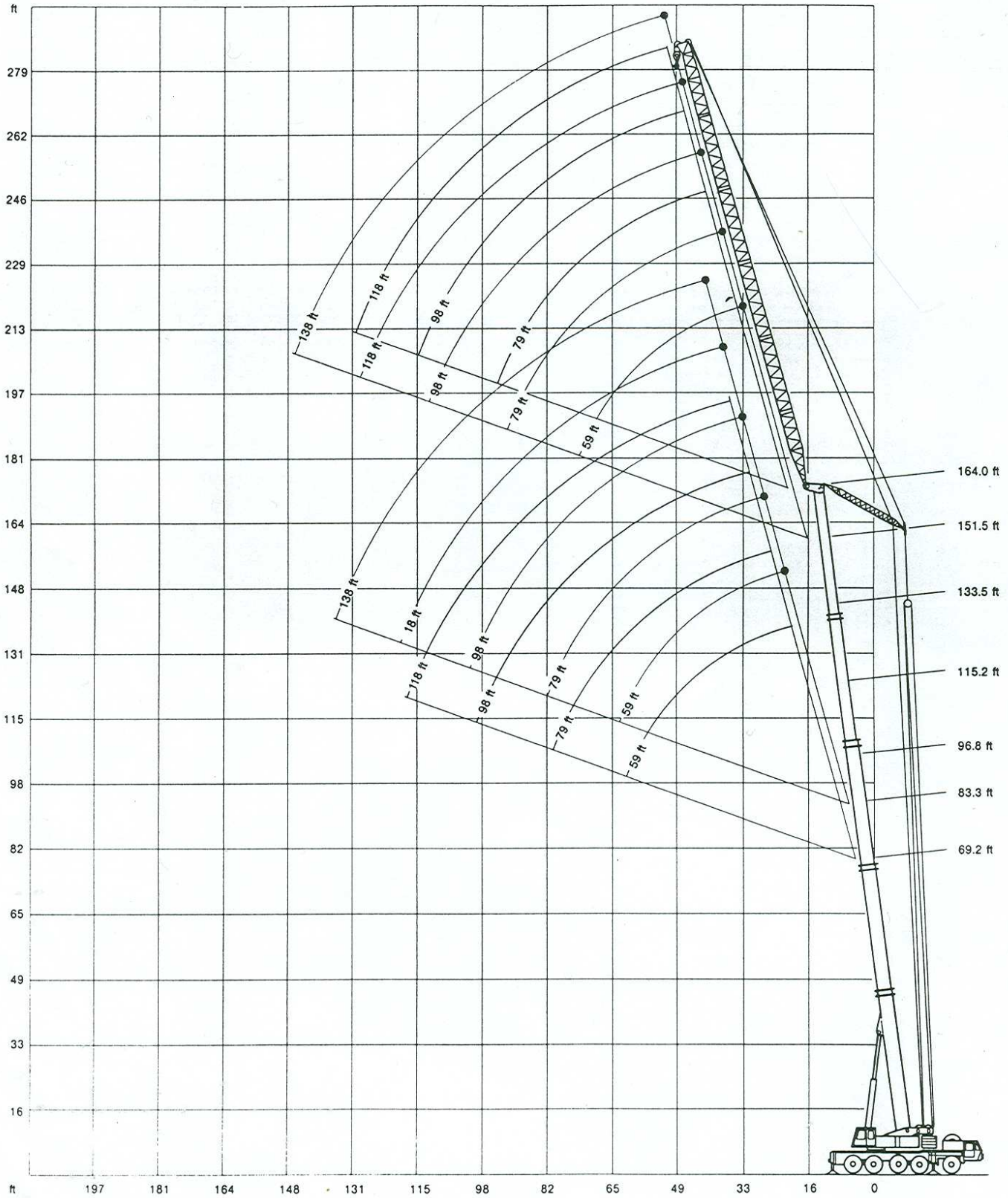
Boom	Radius	Luffing fly jib				
		59.0 ft	79.0 ft	98.0 ft	118.0 ft	138.0 ft
		1,000 lb				
		ft				
69.2 ft*	52	46.5	-	-	-	-
	59	39.5	-	-	-	-
	65	35.0	34.5	-	-	-
	72	30.7	30.3	26.0	-	-
	79	-	27.0	24.1	-	-
	85	-	24.5	22.1	17.0	-
	92	-	22.2	20.2	15.8	-
	98	-	-	19.2	14.8	-
	105	-	-	18.2	13.6	-
	111	-	-	17.0	12.6	-
83.3 ft*	118	-	-	-	12.3	-
	124	-	-	-	12.1	-
	59	38.1	-	-	-	-
	65	33.7	33.2	-	-	-
	72	29.6	29.2	-	-	-
	79	26.3	25.9	23.0	-	-
	85	-	23.4	21.4	17.0	-
	92	-	21.3	19.8	15.8	-
	98	-	19.7	18.3	14.8	10.4
	105	-	-	17.4	13.6	9.6
96.8 ft*	111	-	-	16.2	12.6	9.0
	118	-	-	-	12.3	8.3
	124	-	-	-	12.1	7.7
	131	-	-	-	11.7	7.0
	138	-	-	-	-	6.8
	144	-	-	-	-	6.4
	151	-	-	-	-	6.1
	65	31.8	-	-	-	-
	72	27.8	27.4	-	-	-
	79	24.8	24.3	-	-	-
85	-	22.1	19.9	-	-	
92	-	20.0	18.4	14.0	-	
98	-	18.4	17.2	13.2	-	
105	-	-	16.3	12.7	9.4	
111	-	-	15.1	12.1	8.6	
118	-	-	13.9	11.6	8.1	
124	-	-	-	11.2	7.5	
131	-	-	-	10.8	6.8	
138	-	-	-	10.3	6.3	
144	-	-	-	-	5.9	
151	-	-	-	-	5.7	
157	-	-	-	-	5.5	

\*Tele 1 verbolzt · pinned · verrouillé

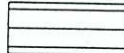

**59,500 lb**  **360° 75%**

Boom	Radius	Luffing fly jib				
		59.0 ft	79.0 ft	98.0 ft	118.0 ft	138.0 ft
		1,000 lb				
		ft				
115.2 ft	72	28.3	-	-	-	-
	79	25.0	-	-	-	-
	85	22.8	22.3	-	-	-
	92	-	20.2	15.8	-	-
	98	-	18.6	15.0	11.9	-
	105	-	16.9	14.7	11.2	-
	111	-	-	14.3	10.8	7.7
	118	-	-	13.8	10.1	7.2
	124	-	-	13.2	9.7	6.8
	131	-	-	-	9.2	6.1
133.5 ft	138	-	-	-	9.0	5.5
	144	-	-	-	8.6	5.3
	151	-	-	-	-	5.0
	157	-	-	-	-	4.8
	164	-	-	-	-	4.6
	79	22.0	-	-	-	-
	85	21.2	16.7	-	-	-
	92	19.3	16.0	-	-	-
	98	-	15.8	12.8	-	-
	105	-	15.6	12.5	9.0	-
111	-	14.8	12.3	8.8	-	
118	-	-	12.1	8.6	5.0	
124	-	-	11.9	8.4	5.0	
131	-	-	11.4	7.9	4.8	
138	-	-	-	7.4	4.8	
144	-	-	-	7.2	4.6	
151	-	-	-	7.0	4.6	
157	-	-	-	-	4.4	
164	-	-	-	-	4.1	
170	-	-	-	-	4.1	
151.5 ft	85	13.2	-	-	-	-
	92	13.2	-	-	-	-
	98	13.2	12.7	-	-	-
	105	-	12.7	9.7	-	-
	111	-	12.7	9.7	4.8	-
	118	-	12.5	9.4	4.8	-
	124	-	-	9.4	4.8	2.2
	131	-	-	9.2	4.8	2.2
	138	-	-	9.0	4.8	2.2
	144	-	-	-	4.8	2.2
151	-	-	-	4.8	2.2	
157	-	-	-	4.8	2.2	
164	-	-	-	-	2.2	
170	-	-	-	-	2.2	
177	-	-	-	-	2.2	
164.0 ft	98	-	9.2	-	-	-
	105	-	8.8	5.7	-	-
	111	-	8.6	5.7	-	-
	118	-	8.3	5.7	2.2	-
	124	-	8.3	5.7	2.2	-
	131	-	-	5.7	2.2	-
	138	-	-	5.7	2.2	-
	144	-	-	5.7	2.2	-
	151	-	-	-	2.2	-
	157	-	-	-	2.2	-

# Working range luffing fly jib, main boom 83°

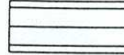



# Lifting capacities luffing fly jib, main boom 83°, in 1,000 lb

59,500 lb   360° 75%

Boom	Radius	Luffing fly jib				
		59.0 ft	79.0 ft	98.0 ft	118.0 ft	138.0 ft
	ft	1,000 lb				
	26	68.0	-	-	-	-
	29	67.0	-	-	-	-
	33	65.5	52.7	-	-	-
	39	54.0	48.7	37.6	-	-
	46	44.0	45.1	35.2	24.9	-
	52	37.5	40.7	33.2	23.8	-
<b>69.2 ft*</b>	59	27.8	34.8	30.4	22.4	-
	65	-	30.6	28.6	21.0	-
	72	-	25.7	26.0	19.6	-
	79	-	-	24.1	18.2	-
	85	-	-	22.1	17.2	-
	92	-	-	17.5	16.0	-
	98	-	-	-	15.0	-
	105	-	-	-	13.8	-
	111	-	-	-	12.6	-
	26	59.5	-	-	-	-
	29	59.5	-	-	-	-
	33	59.4	42.9	-	-	-
	39	56.4	41.9	32.0	-	-
	46	47.9	39.6	30.4	23.1	-
	52	40.5	38.0	29.2	22.1	13.2
	59	32.9	35.9	27.5	21.1	13.0
	65	-	32.5	26.1	20.3	12.6
<b>83.3 ft*</b>	72	-	28.3	24.7	19.2	12.3
	79	-	21.3	23.0	18.0	11.8
	85	-	-	21.4	17.0	11.4
	92	-	-	19.0	15.8	10.7
	98	-	-	14.8	14.8	10.3
	105	-	-	-	13.6	9.6
	111	-	-	-	12.6	9.0
	118	-	-	-	-	8.3
	124	-	-	-	-	7.7
	131	-	-	-	-	7.0
	29	50.7	-	-	-	-
	33	50.7	-	-	-	-
	39	50.7	35.3	-	-	-
	46	48.8	34.1	26.4	-	-
	52	42.2	33.1	25.8	19.8	-
	59	35.1	31.5	24.9	19.6	11.0
	65	-	30.5	23.5	19.0	11.0
	72	-	29.1	22.0	18.1	11.0
<b>96.8 ft*</b>	79	-	23.3	20.9	17.1	11.0
	85	-	-	19.8	16.3	11.0
	92	-	-	18.4	14.9	10.5
	98	-	-	16.8	14.3	10.1
	105	-	-	-	13.2	9.4
	111	-	-	-	12.4	8.6
	118	-	-	-	11.4	8.1
	124	-	-	-	-	7.5
	131	-	-	-	-	6.8

\*Tele 1 verbolzt · pinned · verrouillé

59,500 lb   360° 75%

Boom	Radius	Luffing fly jib				
		59.0 ft	79.0 ft	98.0 ft	118.0 ft	138.0 ft
	ft	1,000 lb				
	33	37.4	-	-	-	-
	39	36.6	27.6	-	-	-
	46	35.0	26.6	20.4	-	-
	52	30.9	26.0	19.8	16.1	-
	59	25.8	25.3	19.1	15.2	8.3
	65	20.4	24.7	18.5	14.6	8.3
	72	-	21.6	17.8	14.1	8.3
<b>115.2 ft</b>	79	-	18.1	17.1	13.4	8.3
	85	-	-	16.5	12.8	8.3
	92	-	-	15.8	12.3	8.3
	98	-	-	13.4	11.9	8.3
	105	-	-	-	11.2	8.3
	111	-	-	-	10.8	7.7
	118	-	-	-	9.7	7.2
	124	-	-	-	-	6.8
	131	-	-	-	-	6.1
	138	-	-	-	-	5.4
	39	27.1	20.7	-	-	-
	46	25.7	20.0	16.0	-	-
	52	24.9	19.4	15.6	11.4	-
	59	24.0	18.7	14.9	11.0	5.5
	65	22.4	18.1	14.5	10.8	5.5
	72	-	17.6	14.1	10.3	5.5
	79	-	17.1	13.8	10.1	5.5
<b>133.5 ft</b>	85	-	15.9	13.4	9.9	5.5
	92	-	-	13.0	9.6	5.5
	98	-	-	12.8	9.4	5.5
	105	-	-	11.4	9.0	5.5
	111	-	-	-	8.8	5.5
	118	-	-	-	8.6	5.5
	124	-	-	-	-	5.5
	131	-	-	-	-	5.5
	138	-	-	-	-	5.5
	39	22.1	-	-	-	-
	46	20.9	15.8	-	-	-
	52	19.9	15.4	11.0	-	-
	59	19.1	15.2	11.0	5.5	-
	65	18.3	15.0	11.0	5.5	2.2
	72	-	14.5	11.0	5.5	2.2
	79	-	14.3	10.7	5.5	2.2
	85	-	14.1	10.5	5.5	2.2
<b>151.5 ft</b>	92	-	-	10.3	5.5	2.2
	98	-	-	9.9	5.5	2.2
	105	-	-	9.6	5.5	2.2
	111	-	-	-	5.5	2.2
	118	-	-	-	5.5	2.2
	124	-	-	-	5.5	2.2
	131	-	-	-	-	2.2
	138	-	-	-	-	2.2
	39	-	-	-	-	-
	46	-	11.2	-	-	-
	52	-	11.2	7.7	-	-
	59	-	11.2	7.7	2.2	-
	65	-	11.2	7.7	2.2	-
	72	-	11.2	7.7	2.2	-
	79	-	11.2	7.7	2.2	-
<b>164.0 ft</b>	85	-	10.8	7.7	2.2	-
	92	-	-	7.7	2.2	-
	98	-	-	7.7	2.2	-
	105	-	-	7.7	2.2	-
	111	-	-	-	2.2	-
	118	-	-	-	2.2	-
	124	-	-	-	2.2	-